

MARTIN CENTER ROOF REPLACEMENT

120 BROAD STREET, NEW LONDON, CONNECTICUT 06320



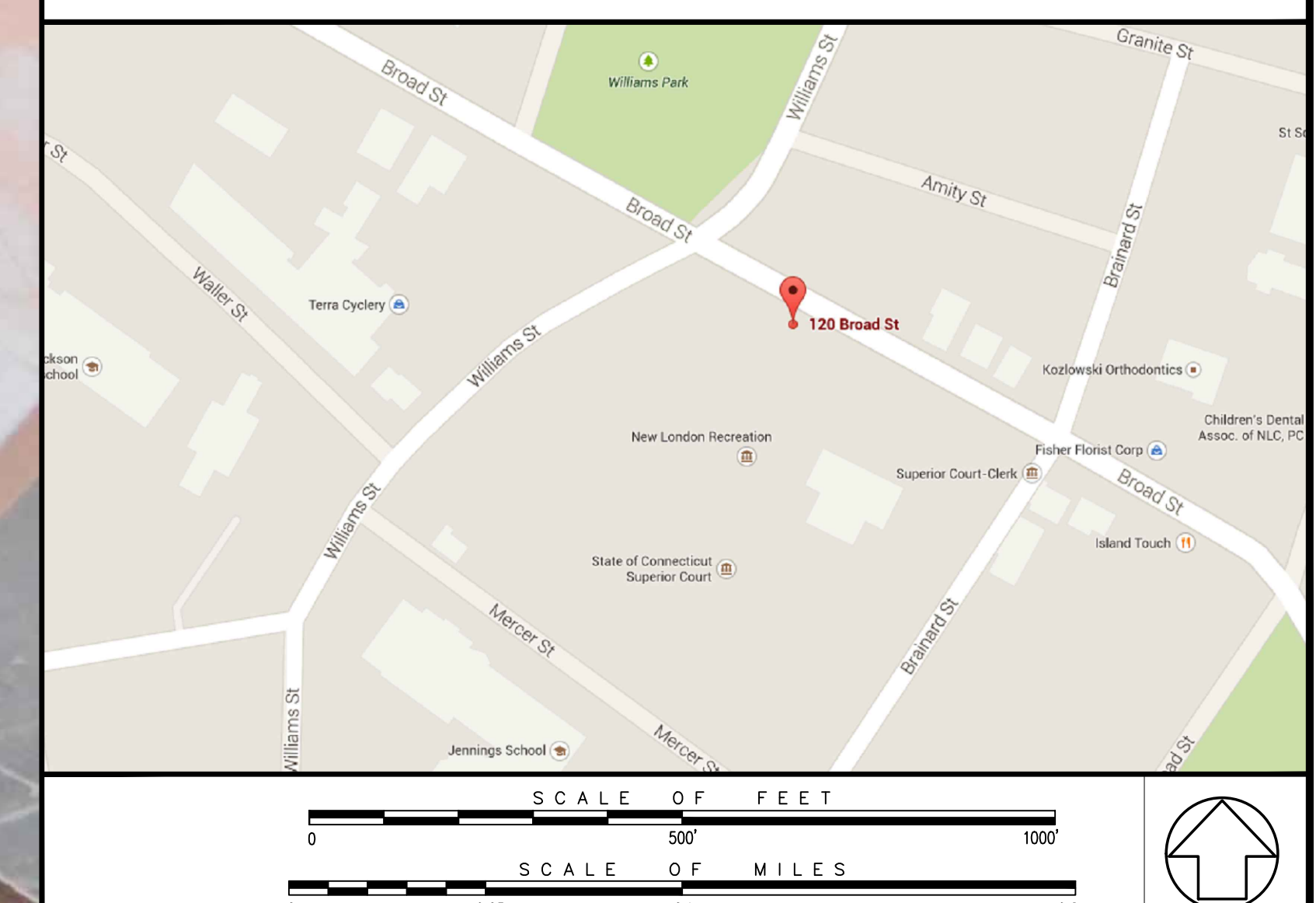
SHEET INDEX

DISCIPLINE	SERIES	SHEET NUMBER	SHEET TITLE	ISSUE DATE					
				1	2	3	4	5	
			1. DESIGN DEVELOPMENT 2. FOR CONSTRUCTION SET 3. ADDENDUM #1						
				11/19/2014	7/22/2015	7/29/2015			
GENERAL	GENERAL		COVER SHEET	•	•	•			
		G001	ABBREVIATIONS AND GRAPHIC SYMBOLS	•	•	•			
	SITE	C101	BUILDING SITE PLAN	•	•	•			
ARCHITECTURAL	PLANS	A101	SENIOR CENTER FLOOR PLAN & RCP	•	•	•			
		A102	ROOF PLAN & DEMOLITION PLAN	•	•	•			
	ELEVATIONS	A200	EXTERIOR ELEVATIONS	•	•	•			
	DETAILS	A501	THERMOPLASTIC ROOF DETAILS	•	•	•			
		A502	GATE DETAILS	•	•	•			
MECHANICAL, ELECTRICAL, PLUMBING	PLANS	MEP101	SENIOR CENTER MEP PLAN	•	•	•			

GENERAL NOTES

- The intent of the Contract Documents is to include all items necessary for the proper execution and completion of all Work by the Contractor. The Contract Documents are complementary, and what is required by one shall be as binding as if required by all. Where a conflict within the Contract Documents exists, the Contractor shall provide the better quality or greater quantity of work in accordance with the Architect's resolution without any increase in the Contract sum. Organization of the Specifications into divisions, sections and articles, and arrangement of sheets shall not control the Contractor in dividing the work among subcontractors, or in establishing the extent of Work to be performed by any trade.
- REFERENCE KEY NOTES and SHEET KEY NOTES are intended to indicate and clarify the extent and requirements of the Work. They do not indicate every location or occurrence of required Work. The lack of a key note to an individual item of Work will not relieve the Contractor of responsibility to execute that Work as part of the Contract when the requirement for that Work is logically inferred by other parts of the Contract Documents.
- EACH AND EVERY SUBCONTRACTOR shall be bound by the entire set of contract documents, which include the plans, specifications, supplemental conditions, addenda, etc. Regardless of each particular contractor's trade, scope of work, area of expertise, contractual obligations, past experience, etc., they shall be bound by the entire set of contract documents.
- EACH AND EVERY SUBCONTRACTOR shall maintain a full set of the most up-to-date plans and specifications ON THE JOBSITE throughout the construction period.
- Refer to the Architectural drawings for exact locations and coordination requirements. The architectural drawings control dimensional placement and positioning of EVERYTHING. Any conflicts or inconsistencies including those with existing conditions shall be brought to the attention of the Architect for resolution.
- Refer to MEP Drawings for additional demolition, removal, cutting and patching requirements. Field verify mechanical, plumbing or electrical work requiring cutting and patching of architectural elements including (but not limited to) partitions, ceilings, casework and finishes. Provide all cutting, patching and/or replacement to provide a concealed installation.
- All work, including MEP and structural work shall be coordinated with the existing building structure, MEP systems and architectural elements. Each subcontractor shall inspect existing conditions before finalizing their bid. It shall be assumed that they viewed all visible and semi-visible (including above suspended acoustical type ceilings, behind access panels, inside mechanical and electrical rooms). Unless access limitations are so noted in their bids, requests for related additional costs (i.e. change orders) will not be considered.
- Not every single existing element, device, fixture, etc. is shown on the drawings. Any existing item not graphically depicted, annotated and/or not specified to be removed, relocated or to remain on the drawings shall be construed to remain unless it falls under the conditions addressed under item 3 above. Any removal, reinstallation (including minor relocation) and/or minor modifications shall be included in the cost of the Work and not considered additional Work.
- Field verify all dimensions and conditions, particularly prior to the creation and submission of shop drawings. While the drawings are graphically drawn to scale, do not scale drawings for any critical dimensional information. Use calculated and field verified dimensions.
- All corners are 90 degrees unless otherwise noted or dimensioned.
- All wiring in finished areas shall be concealed unless otherwise noted.

LOCATION MAP



ARCHITECT

CWA
CHRISTOPHER WILLIAMS ARCHITECTS LLC
88 Willow Street New Haven, CT 06511
203 776 0184 cwarchitectsllc.com

STRUCTURAL ENGINEER



Morrissey Engineering, LLC
58 Essex Street
Deep River, CT 06417
860-582-0312

MEP ENGINEER

HallamICS
575 West Street, Suite 220
Mansfield, MA 02048
Tel: 508.821.9739 Fax: 508.821.9739

ROOFING CONSULTANT

M A CAPUTO ASSOCIATES, LLC
1008 Quinpiac Avenue
New Haven, CT 06513
(203) 469-3216

STANDARD ARCHITECTURAL ABBREVIATIONS							
A/C	Amphiphilic	CSMT	Cosmetic Tile, Connecticut	GRTC	Grating	PB	Panel Board
AAF	Air Conditioning	CT	Ceramic Tile, Connecticut	GSB	Gypsum Sheathing Board	PC	Precast, Portland Cement
AB	Alarm Annunciator	CTSTN	Cut Stone	CSU	Glazed Structural Unit	PCC	Precast Concrete
ABRSH	Abandon	CU	Center, Cantour	CSW	Grass, Grass, Grout	PCP	Precast Concrete
ACC	Asphaltic Concrete, Accessible	CUB	Cubic	CVM	Gymnasium	PE	Photocopy
ACC	Asphaltic Concrete	CURT	Curtain	CYP	Gypsum Board	PE	Photocopy
ACS DR	Access Door	CW	Clockwise, Cold Water	CYP PLAS	Gypsum Plaster	PEJ	Preformed Expansion Joint
ACS PNL	Access Panel	D	Deep	H	High	PERF	Perforated
ACSR	Aluminum Cable Steel Reinforced	DAP	Deep Access Panel	HAZ	Hazard	PH	Phosphate
ACT	Acoustic	DBL	Double	HDR	Hardwood	PH	Phosphate
ACT	Acoustical Ceiling Tile	DCG	Double Current Degree	HND	Hardwood	PH	Phosphate
AD	Area Drain	DEPT	Department	HNG	Hangar	PH	Phosphate
AD	Americans with Disabilities Act	DET	Detail	HNG	Hangar	PH	Phosphate
ADC	Automatic Door Closer	DF	Drinking Fountain	HND	Hardwood	PH	Phosphate
ADDJ	Additional	DIA	Diameter	HND	Hardwood	PH	Phosphate
ADJ	Adjustable, Adjacent, Adjoining	DIAG	Diagonal	HND	Hardwood	PH	Phosphate
AF	Above Finish Floor	DIM	Dimension	HND	Hardwood	PH	Phosphate
AFG	Above Finished Grade	DIS	Disinfectant	HND	Hardwood	PH	Phosphate
AFS	Above Finished Slab	DISC	Disconnect	HND	Hardwood	PH	Phosphate
AHR	Air Handling Unit	DISP	Dispenser	HND	Hardwood	PH	Phosphate
ALT	Alternate	DJ	Double Joint	HND	Hardwood	PH	Phosphate
ALUM	Aluminum	DMF	Damp Proofing	HND	Hardwood	PH	Phosphate
ANOD	Anodize	DN	Down	HND	Hardwood	PH	Phosphate
ANT	Antenna	DOM	Domestic	HND	Hardwood	PH	Phosphate
APR	Acoustic Panel Ceiling	DR	Drinking Room, Door, Drain	HND	Hardwood	PH	Phosphate
APPROX	Approximate	DRCL	Door Closure	HND	Hardwood	PH	Phosphate
APU	Apartment	DRFR	Door Frame	HND	Hardwood	PH	Phosphate
ARCH	Architectural	DRFL	Door Lower	HND	Hardwood	PH	Phosphate
ARF	Architectural Finish	DRFL	Door Lower	HND	Hardwood	PH	Phosphate
ASPH	Asphaltic	DRFL	Door Lower	HND	Hardwood	PH	Phosphate
ATC	Attachment of Ceiling	DRFL	Door Lower	HND	Hardwood	PH	Phosphate
AUTO	Automatic	DRFL	Door Lower	HND	Hardwood	PH	Phosphate
AV	Audio/Visual	DRFL	Door Lower	HND	Hardwood	PH	Phosphate
AVG	Average	DRFL	Door Lower	HND	Hardwood	PH	Phosphate
AW	Architectural Woodwork	DRFL	Door Lower	HND	Hardwood	PH	Phosphate
AWN	Awning	DRFL	Door Lower	HND	Hardwood	PH	Phosphate
AWT	Acoustical Wall Treatment	DRFL	Door Lower	HND	Hardwood	PH	Phosphate
B/	Bottom of	E	East, Modulus of Elasticity	IA	Included Area	Q	Quarry Tile Base
BA	Bright Anemoid	EA	Each	KB	Knee Brace	Q	Quarry Tile Base
BAL	Balloon	ECC	Eccentric	KD	Knob Dried, Knock Down	Q	Quarry Tile Base
BALC	Balcony	ECC	Eccentric	KD	Knob Dried, Knock Down	Q	Quarry Tile Base
BAT	Bottom, Battery	ECC	Eccentric	KD	Knob Dried, Knock Down	Q	Quarry Tile Base
BB	Baseboard, Bulletin Board	ECC	Eccentric	KD	Knob Dried, Knock Down	Q	Quarry Tile Base
BBR	Baseboard Radiator	ECC	Eccentric	KD	Knob Dried, Knock Down	Q	Quarry Tile Base
BB	Baseboard	ECC	Eccentric	KD	Knob Dried, Knock Down	Q	Quarry Tile Base
BCL	Broom Closet	ECC	Eccentric	KD	Knob Dried, Knock Down	Q	Quarry Tile Base
BD	Boundary	ECC	Eccentric	KD	Knob Dried, Knock Down	Q	Quarry Tile Base
BBRY	Bevel	ECC	Eccentric	KD	Knob Dried, Knock Down	Q	Quarry Tile Base
BEV	Bevel	ECC	Eccentric	KD	Knob Dried, Knock Down	Q	Quarry Tile Base
BF	Both Faces, Bottom Face	ECC	Eccentric	KD	Knob Dried, Knock Down	Q	Quarry Tile Base
BFF	Below Finish Floor	ECC	Eccentric	KD	Knob Dried, Knock Down	Q	Quarry Tile Base
BTM	Bottom	ECC	Eccentric	KD	Knob Dried, Knock Down	Q	Quarry Tile Base
BKBD	Bookcase	ECC	Eccentric	KD	Knob Dried, Knock Down	Q	Quarry Tile Base
BLD	Building	ECC	Eccentric	KD	Knob Dried, Knock Down	Q	Quarry Tile Base
BLDG	Building	ECC	Eccentric	KD	Knob Dried, Knock Down	Q	Quarry Tile Base
BLDR	Boiler	ECC	Eccentric	KD	Knob Dried, Knock Down	Q	Quarry Tile Base
BLT	Ballast	ECC	Eccentric	KD	Knob Dried, Knock Down	Q	Quarry Tile Base
BLT	Borrowed Light	ECC	Eccentric	KD	Knob Dried, Knock Down	Q	Quarry Tile Base
BLM	Beam, Benchmark	ECC	Eccentric	KD	Knob Dried, Knock Down	Q	Quarry Tile Base
BOS	Bottom of Steel	ECC	Eccentric	KD	Knob Dried, Knock Down	Q	Quarry Tile Base
BT	Bedroom	ECC	Eccentric	KD	Knob Dried, Knock Down	Q	Quarry Tile Base
BRD	Bridging	ECC	Eccentric	KD	Knob Dried, Knock Down	Q	Quarry Tile Base
BRG	Bearing	ECC	Eccentric	KD	Knob Dried, Knock Down	Q	Quarry Tile Base
BRP	Burip	ECC	Eccentric	KD	Knob Dried, Knock Down	Q	Quarry Tile Base
BRZ	Brize	ECC	Eccentric	KD	Knob Dried, Knock Down	Q	Quarry Tile Base
BS	Both Sides	ECC	Eccentric	KD	Knob Dried, Knock Down	Q	Quarry Tile Base
BST	Basement	ECC	Eccentric	KD	Knob Dried, Knock Down	Q	Quarry Tile Base
BT	Bottom	ECC	Eccentric	KD	Knob Dried, Knock Down	Q	Quarry Tile Base
BTM	Bottom	ECC	Eccentric	KD	Knob Dried, Knock Down	Q	Quarry Tile Base
BU	Built-up	ECC	Eccentric	KD	Knob Dried, Knock Down	Q	Quarry Tile Base
BUR	Built-up Roofing	ECC	Eccentric	KD	Knob Dried, Knock Down	Q	Quarry Tile Base
BW	Both Ways	ECC	Eccentric	KD	Knob Dried, Knock Down	Q	Quarry Tile Base
C	Channel	F	Female	MA	Metal Lath, Masonry	S	South
C to C	Center to Center	F	Female	MA	Metal Lath, Masonry	S	South
C&P	Carpet and Pad	F	Female	MA	Metal Lath, Masonry	S	South
CAB	Cabinet	F	Female	MA	Metal Lath, Masonry	S	South
CAN	Canopy	F	Female	MA	Metal Lath, Masonry	S	South
CANTIL	Cantelever	F	Female	MA	Metal Lath, Masonry	S	South
CATW	Catwalk	F	Female	MA	Metal Lath, Masonry	S	South
CAV	Carry	F	Female	MA	Metal Lath, Masonry	S	South
CB	Catch Basin	F	Female	MA	Metal Lath, Masonry	S	South
CCB	Cementitious (Backer) Board	F	Female	MA	Metal Lath, Masonry	S	South
CCTV	Close Circuit Television	F	Female	MA	Metal Lath, Masonry	S	South
CCW	Counterclockwise	F	Female	MA	Metal Lath, Masonry	S	South
CER	Ceramic	F	Female	MA	Metal Lath, Masonry	S	South
CF	Cubic Foot	F	Female	MA	Metal Lath, Masonry	S	South
CFG	Counterflashing	F	Female	MA	Metal Lath, Masonry	S	South
CG	Corner Guard	F	Female	MA	Metal Lath, Masonry	S	South
CHBD	Chalk Board	F	Female	MA	Metal Lath, Masonry	S	South
CHFR	Chamber	F	Female	MA	Metal Lath, Masonry	S	South
CHMR	Chamber	F	Female	MA	Metal Lath, Masonry	S	South
CI	Cast Iron, Cubic Inch	F	Female	MA	Metal Lath, Masonry	S	South
CIR	Circular	F	Female	MA	Metal Lath, Masonry	S	South
CIP	Cast in Situ	F	Female	MA	Metal Lath, Masonry	S	South
CJK	Chalkboard	F	Female	MA	Metal Lath, Masonry	S	South
CL	Centerline	F	Female	MA	Metal Lath, Masonry	S	South
CLG	Contract Limit Line	F	Female	MA	Metal Lath, Masonry	S	South
CLM	Clearance	F	Female	MA	Metal Lath, Masonry	S	South
CLR	Classroom	F	Female	MA	Metal Lath, Masonry	S	South
CLT	Clear	F	Female	MA	Metal Lath, Masonry	S	South
CON	Centimeter(s)	F	Female	MA	Metal Lath, Masonry	S	South
CON	Concrete Masonry Unit	F	Female	MA	Metal Lath, Masonry	S	South
CONC	Concrete	F	Female	MA	Metal Lath, Masonry	S	South
CONC	Concrete	F	Female	MA	Metal Lath, Masonry	S	South
CONSTR	Construction	F	Female	MA	Metal Lath, Masonry	S	South
COORD	Coordinate	F	Female	MA	Metal Lath, Masonry	S	South
COF	Coping	F	Female	MA	Metal Lath, Masonry	S	South
CORR	Corridor, Correct	F	Female	MA	Metal Lath, Masonry	S	South
COV	Cover	F	Female	MA	Metal Lath, Masonry	S	South
COVPL	Cover Plate	F	Female	MA	Metal Lath, Masonry	S	South
CP	Compressible	F	Female	MA	Metal Lath, Masonry	S	South
CP	Compressible	F	Female	MA	Metal Lath, Masonry	S	South
CP	Compressible	F	Female	MA	Metal Lath, Masonry	S	South
CPVC	Chlorinated Polyvinyl Chloride	F	Female	MA	Metal Lath, Masonry	S	South
CR	Crown	F	Female	MA	Metal Lath, Masonry	S	South
CRS	Cold Rolled Steel	F	Female	MA	Metal Lath, Masonry	S	South
CS	Cast Stone	F	Female	MA	Metal Lath, Masonry	S	South
CSB	Concrete Splashblock	F	Female	MA	Metal Lath, Masonry	S	South
CSG	Casing	F	Female	MA	Metal Lath, Masonry	S	South
CSK	Countersink	F	Female	MA	Metal Lath, Masonry	S	South

GRAPHIC SYMBOLS ELECTRONIC SAFETY AND SECURITY

ELECTRONIC DETECTION AND ALARM					
[Symbol]	ALARM - FIRE COMMUNICATOR	[Symbol]	ALARM - TRANSPONDER OR TRANSMITTER	[Symbol]	DETECTOR - HEAT, RATE OF RISE
[Symbol]	ALARM - FIRE CONTROL PANEL	[Symbol]	ALARM - VOICE COMMUNICATION PANEL	[Symbol]	DETECTOR - HEAT, RATE OF RISE
[Symbol]	ALARM - FIRE, MANUAL PULL STATION	[Symbol]	DETECTION SWITCH - ABORT	[Symbol]	DETECTOR - IONIZATION AND HEAT SMOKE
[Symbol]	ALARM - GONG	[Symbol]	DETECTION SWITCH - VALVE TAMPER	[Symbol]	DETECTOR - IONIZATION AND PHOTOELECTRIC SMOKE
[Symbol]	ALARM - HORN STROBE	[Symbol]	DETECTION - GAS	[Symbol]	DETECTOR - IONIZATION SMOKE
[Symbol]	ALARM - HORN	[Symbol]	DETECTION - SMOKE ALARM AND PRESSURE PANEL	[Symbol]	DETECTOR - IONIZATION, PHOTOELECTRIC AND HEAT SMOKE
[Symbol]	ALARM - STROBE	[Symbol]	ALARM - ELECTROMAGNETIC DOOR HOLDER	[Symbol]	DETECTOR - PHOTOELECTRIC AND HEAT SMOKE
[Symbol]	ALARM - MANUAL CONTROL	[Symbol]	DETECTOR - FLAME FLOKER	[Symbol]	DETECTOR - PHOTOELECTRIC SMOKE
[Symbol]	ALARM - MASTER CONTROL PANEL	[Symbol]	DETECTOR - HEAT SMOKE	[Symbol]	DETECTOR - SMOKE
[Symbol]	ALARM - SPRINKLER SYSTEM WATER FLOW BELL	[Symbol]	DETECTOR - HEAT SMOKE FOR DUCT	[Symbol]	DETECTOR - SMOKE, FOR DUCT
[Symbol]	ALARM - TAMPER SWITCH	[Symbol]	DETECTOR - HEAT COMBINATION	[Symbol]	DETECTOR - SWITCH LEVEL
[Symbol]		[Symbol]	DETECTOR - HEAT FIXED TEMPERATURE	[Symbol]	FIRE ALARM ANNUNCIATOR PANEL

GRAPHIC SYMBOLS SITE

[Symbol]	EXISTING SPOT ELEVATION	[Symbol]	GRIT CHAMBER	[Symbol]	SANITARY PRESSURE VESSEL
[Symbol]	SPOT ELEVATION	[Symbol]	GAS METER	[Symbol]	SANITARY VALVE VAULT
[Symbol]	SPOT ELEVATION, BOTTOM OF CURB	[Symbol]	NATURAL GAS MANHOLE	[Symbol]	SEPTIC TANK
[Symbol]	SPOT ELEVATION, BOTTOM OF STEPS	[Symbol]	GAS RECEIVER	[Symbol]	STEAM PIT
[Symbol]	BOTTOM OF WALL	[Symbol]	GAS TRAP	[Symbol]	TIDE GAGE
[Symbol]	SPOT ELEVATION, TOP OF FINISH FLOOR	[Symbol]	GAS VALVE VAULT	[Symbol]	TIRE TREDDLE
[Symbol]	MATCH EXISTING GRADE	[Symbol]	HANDICAP SYMBOL	[Symbol]	TANK (BELOW GROUND)
[Symbol]	SPOT ELEVATION, TOP OF CURB	[Symbol]	HORIZONTAL VERTICAL CONTROL POINT	[Symbol]	TANK (HORIZONTAL ABOVE GROUND)
[Symbol]	SPOT ELEVATION, TOP OF STEPS	[Symbol]	HORIZONTAL VERTICAL CONTROL POINT	[Symbol]	TANK (VERTICAL ABOVE GROUND)
[Symbol]	SPOT ELEVATION, TOP OF WALL	[Symbol]	HYDRANT	[Symbol]	TRAFFIC ARM WITH CARD READER
[Symbol]	PARKING TURNING ARROW	[Symbol]	INTERSTATE HIGHWAY SYMBOL	[Symbol]	TRAFFIC ARM MECHANICAL SWING
[Symbol]	STRAIGHT DIRECTION ARROW	[Symbol]	US HIGHWAY SYMBOL	[Symbol]	TRAFFIC CONTROL POINT
[Symbol]	STRAIGHT AND TURN ARROW	[Symbol]	STATE HIGHWAY SYMBOL	[Symbol]	WATER HANDHOLE
[Symbol]	CATCH BASIN	[Symbol]	MONITORING WELL	[Symbol]	WATER METER
[Symbol]	ROUND CATCH BASIN	[Symbol]	PHOTO CONTROL POINT	[Symbol]	WATER SOFTENER
[Symbol]	SANITARY CLEANOUT	[Symbol]	POST INDICATOR VALVE	[Symbol]	WATER VALVE VAULT
[Symbol]	CORE DRILL HOLE DRILLED	[Symbol]	PUMP STATION	[Symbol]	INDUSTRIAL WASTE WATER METER
[Symbol]	CORE DRILL HOLE UNDRILLED	[Symbol]	REGULATOR VALVE	[Symbol]	INDUSTRIAL WASTE WATER MANHOLE
[Symbol]	FUEL OIL METER	[Symbol]	STORM DRAINAGE MANHOLE	[Symbol]	LIGHT POLE
[Symbol]	FUEL OIL MANHOLE	[Symbol]	SIGN	[Symbol]	UTILITY POLE
[Symbol]	FUEL OIL VAULT	[Symbol]	SANITARY MANHOLE	[Symbol]	PARKING METER
[Symbol]	GREASE TRAP	[Symbol]	SANITARY METER	[Symbol]	

GRAPHIC SYMBOLS FIRE SUPPRESSION

[Symbol]	SECURITY ACCESS CONTROL UNIT	[Symbol]	FIRE SUPPRESSION, PENDANT HEAD SPRINKLER	[Symbol]	FIRE SUPPRESSION, SPRINKLER HEAD, SIDEWALL PENDANT
[Symbol]	FIRE SUPPRESSION, FIRE DEPARTMENT KEY BOX	[Symbol]	FIRE SUPPRESSION, HYDRANT, PRIVATE HOUSED TWO-HOSE OUTLET	[Symbol]	FIRE SUPPRESSION, SPRINKLER HEAD, SIDEWALL UPRIGHT
[Symbol]	FIRE SUPPRESSION, SPRINKLER BRANCH HEADS	[Symbol]	FIRE SUPPRESSION, FIRE DEPARTMENT CONNECTION, ONE-WAY	[Symbol]	FIRE SUPPRESSION, EXTINGUISHER, DRY CHEMICAL, BC TYPE
[Symbol]	FIRE SUPPRESSION, SPRINKLER HEAD WITH GUARD	[Symbol]	FIRE SUPPRESSION, FIRE DEPARTMENT CONNECTION, TWO-WAY SHAMSE	[Symbol]	FIRE SUPPRESSION, EXTINGUISHER, DRY CHEMICAL, ABC TYPE
[Symbol]	FIRE SUPPRESSION, NIPPLED UP UPRIGHT SPRINKLER	[Symbol]	FIRE SUPPRESSION, FIRE HOSE CABINET OR CONNECTION	[Symbol]	FIRE SUPPRESSION, CO2 EXTINGUISHER
[Symbol]	FIRE SUPPRESSION, NOZZLE, SPECIAL SPRAY	[Symbol]	FIRE SUPPRESSION, STANDPIPE, DRY HOSE STATION	[Symbol]	FOAM EXTINGUISHER
[Symbol]	FIRE SUPPRESSION, OUTSIDE SPRINKLER	[Symbol]	FIRE SUPPRESSION, STANDPIPE, HOSE CABINET CHARGED	[Symbol]	

GRAPHIC SYMBOLS ELECTRICAL

POWER AND CIRCUITING

[Symbol]	DISTRIBUTION PANEL	[Symbol]	TRANSFORMER	[Symbol]	FULL BOX
[Symbol]	POWER PANEL	[Symbol]	JUNCTION BOX	[Symbol]	ELECTRICAL METER
[Symbol]	LIGHTING PANEL	[Symbol]	JUNCTION BOX, WALL MOUNTED	[Symbol]	

ELECTRICAL DEVICES

[Symbol]	SWITCH, SINGLE POLE	[Symbol]	DISCONNECT SWITCH, UNFUSED	[Symbol]	RECEPTACLE, SPECIAL PURPOSE SIMPLEX
[Symbol]	SWITCH, 3-WAY	[Symbol]	STARTER OR MOTOR CONTROLLER	[Symbol]	RECEPTACLE, SPECIAL PURPOSE DUPLEX
[Symbol]	SWITCH, 3-WAY DIMMER	[Symbol]	STARTER COMBINATION WITH DISCONNECT SWITCH	[Symbol]	RECEPTACLE, RECESSED
[Symbol]	SWITCH, 4-WAY	[Symbol]	OCCUPANCY SENSOR, CEILING MOUNTED	[Symbol]	RECEPTACLE, FLOOR MOUNTED SIMPLEX
[Symbol]	SWITCH, SINGLE POLE DIMMER	[Symbol]	OCCUPANCY SENSOR, WALL MOUNTED	[Symbol]	RECEPTACLE, FLOOR MOUNTED DUPLEX
[Symbol]	SWITCH, CALL FOR AID	[Symbol]	RECEPTACLE, DUPLEX	[Symbol]	SPECIAL PURPOSE RECEPTACLE, FLOOR MOUNTED
[Symbol]	SWITCH, SINGLE POLE JAMB MOUNTED	[Symbol]	RECEPTACLE, DUPLEX SPLIT WIRED	[Symbol]	POWER AND TELEDATA COMBINATION, FLOOR MOUNTED
[Symbol]	SWITCH, SINGLE POLE KEYPAD	[Symbol]	RECEPTACLE, DUPLEX ON EMERGENCY POWER CIRCUIT	[Symbol]	RECEPTACLE, CASWORK/COUNTER/FURNISHINGS MOUNTED
[Symbol]	SWITCH, LOW VOLTAGE MASTER	[Symbol]	RECEPTACLE, SIMPLEX WEATHERPROOF	[Symbol]	POWER AND TELEDATA COMBINATION, CASWORK/COUNTER/FURNISHINGS MOUNTED
[Symbol]	SWITCH, SINGLE POLE WITH PILOT LIGHT	[Symbol]	RECEPTACLE, DUPLEX WEATHERPROOF	[Symbol]	RECEPTACLE, CEILING MOUNTED SIMPLEX
[Symbol]	SWITCH, SINGLE POLE TIMER OPERATED	[Symbol]	DUPLEX RECEPTACLE, GROUND FAULT INTERRUPTER CIRCUIT	[Symbol]	RECEPTACLE, CEILING MOUNTED DUPLEX
[Symbol]	DISCONNECT SWITCH, FUSED	[Symbol]	QUADRUPLEX RECEPTACLE	[Symbol]	"CALL FOR AID" LIGHT

LIGHTING

[Symbol]	LUMINAIRE, CEILING RECESSED	[Symbol]	LUMINAIRE, EXTERIOR WALL SURFACE MOUNTING	[Symbol]	LUMINAIRE, CEILING RECESSED, actual size shown on plan
[Symbol]	LUMINAIRE, CEILING SURFACE DECORATIVE	[Symbol]	LUMINAIRE, EXTERIOR WALL SURFACE MOUNTING - ELEVATION	[Symbol]	LUMINAIRE, CEILING SURFACE MOUNTED, actual size shown on plan
[Symbol]	LUMINAIRE, CASEWORK/MIDLEVEL MOUNTED UP OR DOWN LIGHT	[Symbol]	LUMINAIRE, EMERGENCY LIGHT	[Symbol]	LUMINAIRE, CEILING PENDANT MOUNTED, actual size and shape shown on plan
[Symbol]	LUMINAIRE, CEILING SURFACE UTILITY	[Symbol]	LUMINAIRE, CEILING PENDANT MOUNTED, actual size and shape shown on plan	[Symbol]	LUMINAIRE, UNDERCABINET/SHELF MOUNTED, actual size shown on plan
[Symbol]	LUMINAIRE, WALL SURFACE MOUNTING	[Symbol]	LUMINAIRE, CEILING PENDANT MOUNTED, actual size and shape shown on plan	[Symbol]	TRACK LIGHTING, TRACK MOUNTED DIRECTLY TO CEILING OR WALL

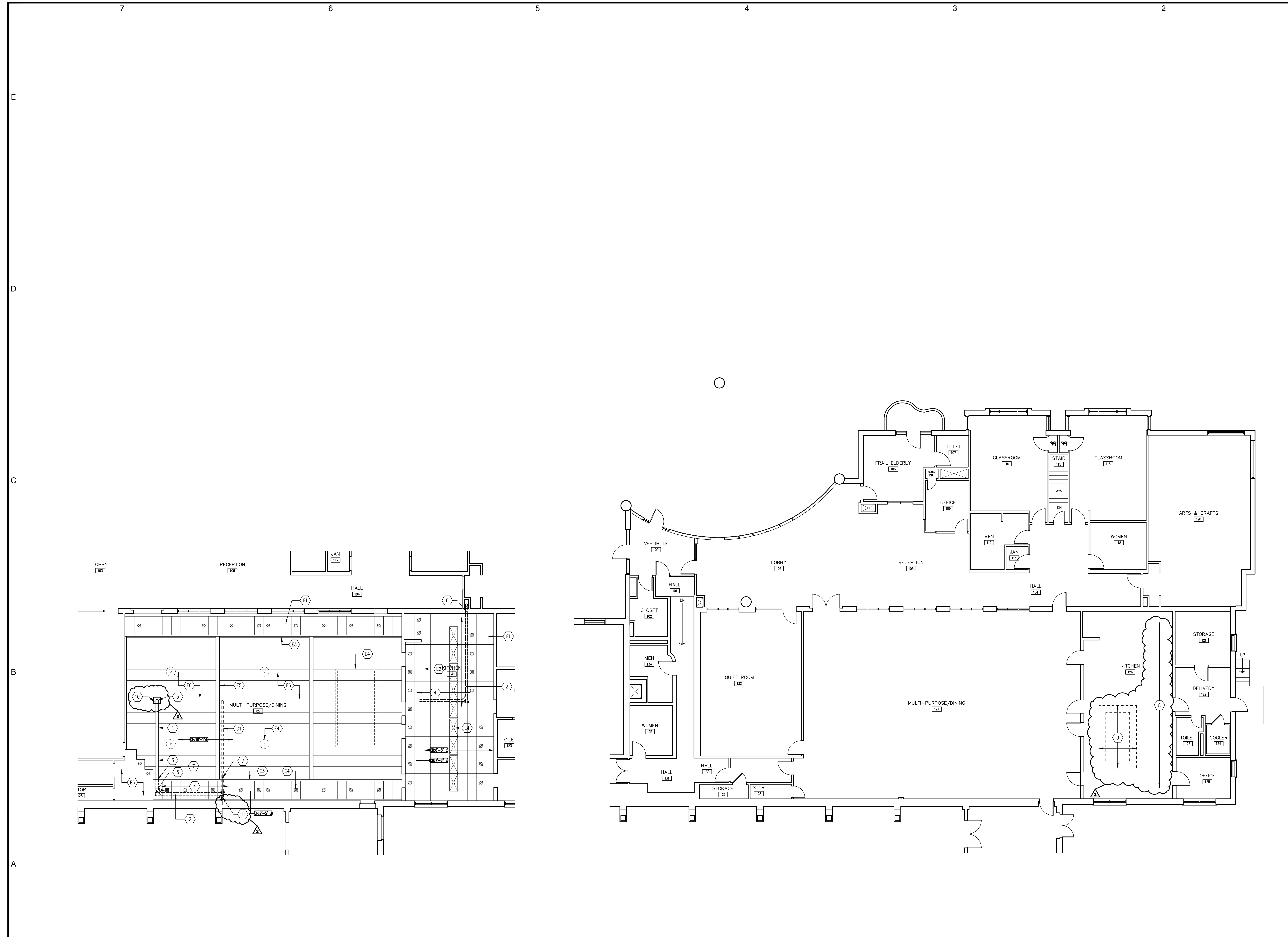
GRAPHIC SYMBOLS ELECTRONIC SAFETY AND SECURITY

ELECTRONIC ACCESS CONTROL AND INTRUSION DETECTION

[Symbol]	SECURITY ACCESS CONTROL UNIT	[Symbol]	SECURITY ACCESS MASTER STATION INTERCOM	[Symbol]	SECURITY ACCESS - SENSOR, BURIED VEHICULAR
[Symbol]	SECURITY ACCESS TELEVISION CAMERA	[Symbol]	SECURITY ACCESS PANIC ALARM	[Symbol]	SECURITY ACCESS - SWITCH, BALANCED MAGNETIC CONTROL
[Symbol]	SECURITY ACCESS BELL	[Symbol]	SECURITY ACCESS - VIDEO CAMERA WITH LENS	[Symbol]	SECURITY ACCESS - TELEPHONE HANDSET
[Symbol]	SECURITY ACCESS BUZZER	[Symbol]	SECURITY ACCESS - VIDEO CAMERA WITH LENS, MOTION DETECTOR WITH PAN AND ZOOM	[Symbol]	SECURITY ACCESS - TOUCH PAD LOCK OR DEVICE
[Symbol]	SECURITY ACCESS INFRARED AND ULTRASONIC MOTION DETECTOR	[Symbol]	SECURITY ACCESS - VIDEO CAMERA, PANNING CAMERA TRAVERSE ANGLE	[Symbol]	SECURITY ACCESS - ULTRASONIC MOTION DETECTOR
[Symbol]	SECURITY ACCESS INTERCOM STATION	[Symbol]	SECURITY ACCESS PASSIVE INFRARED MOTION DETECTOR	[Symbol]	SECURITY ACCESS - REQUEST-TO-EXIT DETECTOR
[Symbol]	SECURITY ACCESS, CARD READER	[Symbol]	SECURITY ACCESS, BIOMETRIC ACCESS CONTROL	[Symbol]	SECURITY ACCESS - DOOR OPENER

GRAPHIC SYMBOLS MATERIALS (CONT)

||
||
||



GENERAL NOTES

- The intent of the Contract Documents is to include all items necessary for the proper execution and completion of all Work by the Contractor. The Contract Documents are complementary, and what is required by one shall be as binding as if required by all. Where a conflict within the Contract Documents exists, the Contractor shall provide the better quality or greater quantity of work in accordance with the Architect's resolution without any increase in the Contract sum. Organization of the Specifications into divisions, sections and articles, and arrangement of sheets shall not control the Contractor in dividing the work among subcontractors, or in establishing the extent of Work to be performed by any trade.
- REFERENCE KEY NOTES and SHEET KEY NOTES are intended to indicate and clarify the extent and requirements of the Work. They do not indicate every location or occurrence of required Work. The lack of a key note to an individual item of Work will not relieve the Contractor of responsibility to execute that Work as part of the Contract when the requirement for that Work is logically inferred by other parts of the Contract Documents.
- All corners are 90 degrees unless noted or dimensioned otherwise.

EXISTING CONDITIONS KEY NOTES

- (E1) EXISTING ACOUSTIC PANEL CEILING
- (E2) EXISTING CEILING LEVEL CHANGE
- (E3) EXISTING CEILING LEVEL CHANGE - GYPSUM BOARD BULKHEAD
- (E4) EXISTING LUMINAIRE
- (E5) EXISTING BEAM
- (E6) EXISTING PAINTED CEILING

DEMOLITION KEYNOTES

- (D1) REMOVE EXISTING RWI INCLUDING ALL RELATED FITTINGS, HANGERS ETC. SEE PLUMBING SHEET FOR FURTHER REQUIREMENTS

NEW WORK KEY NOTES

- NEW RWI - EXPOSED - SEE PLUMBING SHEET FOR FURTHER REQUIREMENTS - PAINT TO MATCH EXISTING CEILING.
- NEW RWI - ABOVE EXISTING ACOUSTIC PANEL CEILING.
- PATCH, REPAIR AND PAINT CEILING AT ABANDONED PENETRATION AT REMOVED HANGERS ETC. AND AT DAMAGE RELATED TO EXISTING ROOF DRAIN AND RWI AND WHERE DAMAGED DURING THE EXECUTION OF THE WORK.
- REMOVE AND RE-INSTALL ACOUSTIC PANELS, REPLACE DAMAGED PANELS WITH NEW MATCHING EXISTING, REPLACE ANY DAMAGED GRID WITH MATCHING - FULL LENGTH PIECES ONLY.
- REMOVE AND RE-INSTALL LUMINAIRE IN NEW LOCATION - CIRCUITING TO REMAIN THE SAME.
- CUT, PATCH AND FIRESTOP - WALL PENETRATION FOR CONNECTION OF NEW TO EXISTING WORK THROUGH MASONRY WALL.
- CUT, PATCH, REPAIR AND PAINT BULKHEAD AT NEW AND REMOVED PIPE PENETRATIONS.
- BAR JOIST AND METAL DECK ROOF STRUCTURE ABOVE. VERIFY SPACING AND SIZE IN FIELD.
- PATCH METAL DECKING AT REMOVED AHU. SPAN 2 JOISTS MINIMUM MATCH EXISTING METAL DECK DEPTH AND TOP OF DECK ELEVATION OVERLAPPING OPENING.
- PROVIDE SHEET METAL ENCLOSURE AT NEW ROOF DRAIN PER DETAILS.
- CUT AND PATCH PIPE ENCLOSURE FOR RAIN WATER LEADER WORK. SEE MEP101 FOR DETAILS.

A7 SENIOR CENTER MAIN FLOOR PARTIAL REFLECTED CEILING PLAN
 1/8" = 1'-0"
 PROJECT NORTH

A5 SENIOR CENTER MAIN FLOOR PLAN ELEVATION: +93'-0"
 1/8" = 1'-0"
 PROJECT NORTH

Ownership and use of documents:
 Drawings and specifications, as instruments of professional service, are and shall remain the property of the Architect. These documents are not to be used in whole or in part, for any other projects or purposes, or by any other parties, than those properly authorized by contract, without the specific written authorization of Christopher Williams Architects, LLC.

STRUCTURAL ENGINEER
 Morrissey Engineering, LLC
 58 Essex Street
 Deep River, CT 06417
 860-532-0312

MEP ENGINEER
Hallam ICS
 575 West Street, Suite 220
 Mansfield, MA 02048
 Tel: 508.821.9759 Fax: 508.821.9739

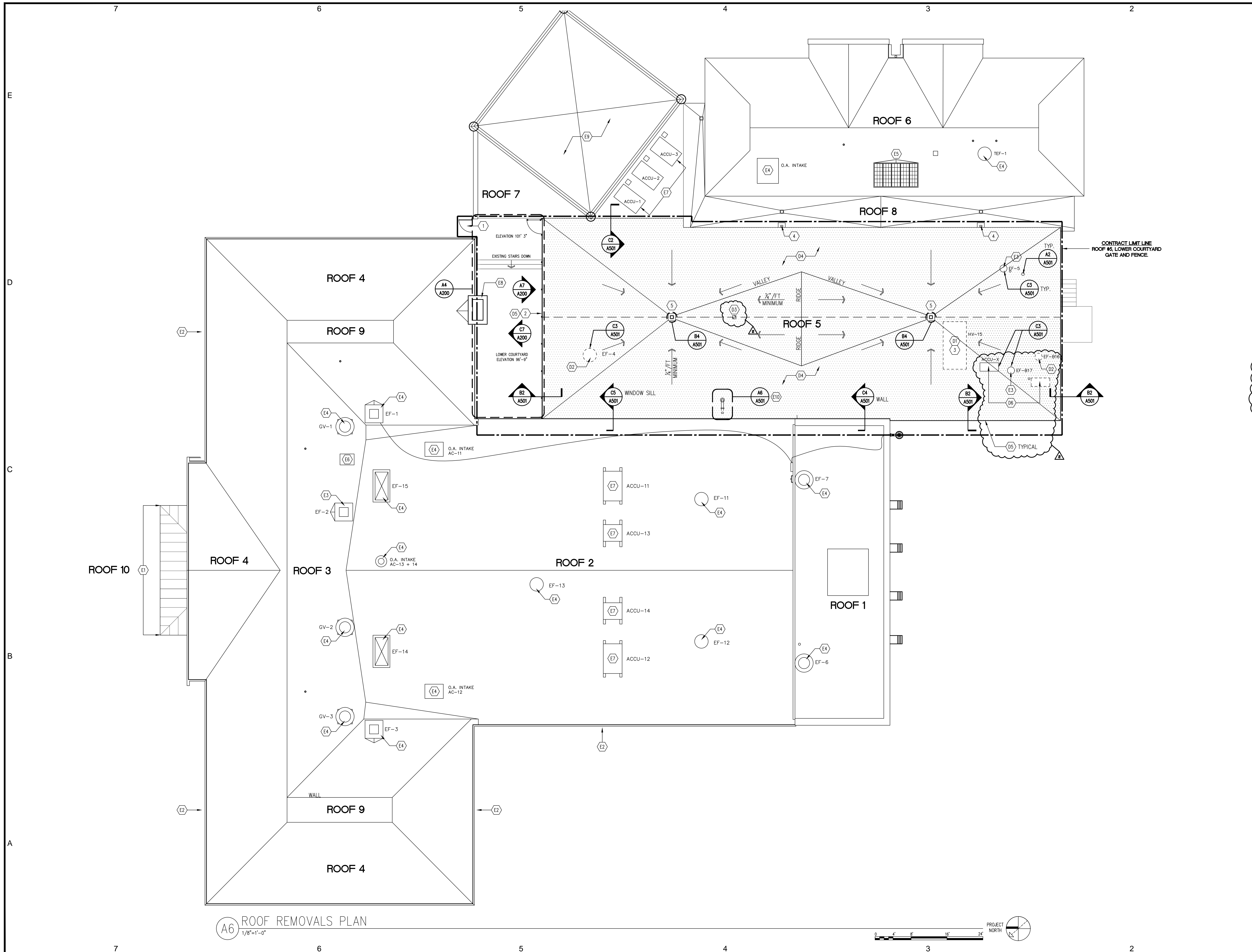
ROOFING CONSULTANT
M A CAPUTO | ASSOCIATES, LLC
 ROOF & BUILDING ENVELOPE CONSULTANTS

PROJECT NAME
MARTIN CENTER ROOF REPLACEMENT
 120 BROAD STREET
 NEW LONDON, CT 06320

CWA
CHRISTOPHER WILLIAMS ARCHITECTS LLC
 85 Willow Street New Haven, CT 06511
 203 776 0184 cwarhitectsllc.com

NO.	DATE	REVISION
2	07/29/15	ADDENDUM #1
1	07/22/15	FOR CONSTRUCTION

DRAWING TITLE
SENIOR CENTER - MAIN FLOOR PLAN AND PARTIAL REFLECTED CEILING PLAN
 SHEET NUMBER
A101
 PROJECT NUMBER
 1418



A6 ROOF REMOVALS PLAN
1/8"=1'-0"

GENERAL NOTES

- The intent of the Contract Documents is to include all items necessary for the proper execution and completion of all Work by the Contractor. The Contract Documents are complementary, and what is required by one shall be as binding as if required by all. Where a conflict within the Contract Documents exists, the Contractor shall provide the better quality or greater quantity of work in accordance with the Architect's resolution without any increase in the Contract sum. Organization of the Specifications into divisions, sections and articles, and arrangement of sheets shall not control the Contractor in dividing the work among subcontractors, or in establishing the extent of Work to be performed by any trade.
- REFERENCE KEY NOTES and SHEET KEY NOTES are intended to indicate and clarify the extent and requirements of the Work. They do not indicate every location or occurrence of required Work. The lack of a key note to an individual item of Work will not relieve the Contractor of responsibility to execute that Work as part of the Contract when the requirement for that Work is logically inferred by other parts of the Contract Documents.
- All corners are 90 degrees unless noted or dimensioned otherwise.

EXISTING CONDITIONS KEY NOTES

- (E1) EXISTING FLAT SEAM COPPER ROOF.
- (E2) EXISTING BUILT IN GUTTER.
- (E3) EXISTING FANS TO REMAIN. SEE MEPI01 FOR DETAILS. PROVIDE NEW CURB FLASHING.
- (E4) EXISTING FAN AND VENT TO REMAIN.
- (E5) EXISTING SKYLIGHT.
- (E6) EXISTING ROOF HATCH.
- (E7) EXISTING HVAC EQUIPMENT.
- (E8) EXISTING MASONRY CHIMNEY.
- (E9) EXISTING KALWALL ROOFING SYSTEM.
- (E10) EXISTING RAIN WATER LEADER INTO BUILDING.

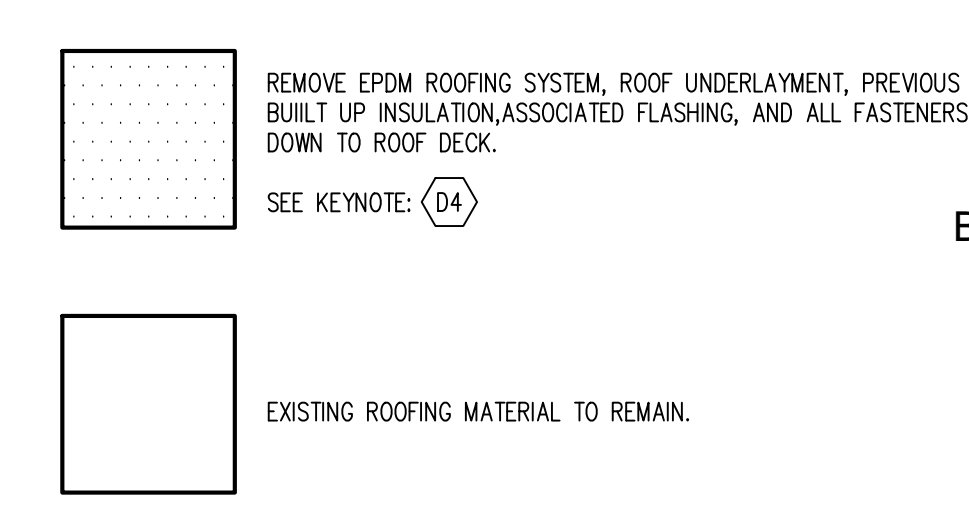
DEMOLITION KEY NOTES

- (D1) REMOVE ABANDONED HVAC UNIT.
- (D2) REMOVE FAN AND CURB. REPLACE PER MEPI01.
- (D3) REMOVE EXISTING ROOF DRAIN AND ASSOCIATED PIPING. (SEE MEPI01)
- (D4) REMOVE EPDM ROOFING SYSTEM. SEE KEY BELOW.
- (D5) REMOVE ROOF EDGE, GRAVEL STOP, EDGE FLASHING.
- (D6) REMOVE, SALVAGE, AND REINSTALL AT NEW LOCATION. REMOVE EXISTING MOUNTING RAILS, CURBS, DUNNAGE, ETC. PROVIDE NEW ELECTRICAL AND REFRIGERANT PENETRATIONS.

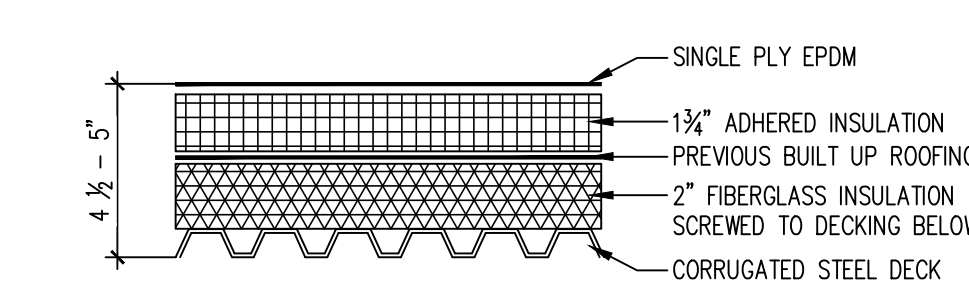
NEW WORK KEY NOTES

- (1) SELF CLOSING GATE.
- (2) SECURITY FENCE TO RESTRICT ACCESS TO ROOF.
- (3) PATCH ALL OPENINGS WITH METAL DECK PER SPECIFICATIONS.
- (4) PROVIDE NEW SCUPPER AT NEW ROOF HEIGHT TO MATCH EXISTING.
- (5) INSTALL NEW ROOF DRAIN, AND DRAIN PIPING. CONNECT TO EXISTING STORM WATER DRAIN PIPING WHERE SHOWN. SEE MEPI01 FOR DETAILS.

ROOFING REMOVALS KEY



EXISTING ROOFING CONDITIONS



ASBESTOS ABATEMENT

ROOF #	TESTING SAMPLE #	DESCRIPTION	APPROX. SQFT.
1,2 & 5	1-5	Glue Only - Rubber Membrane	12,853sqft
1-5	7-8	Hard Black Flashing Mastic around Penetrations, Edge of Roofs, and sidewalls	>100sqft

Ownership and use of documents:
Drawings and specifications, as instruments of professional service, are and shall remain the property of the Architect. These documents are not to be used in whole or in part, for any other projects or purposes, or by any other parties, than those properly authorized by contract, without the specific written authorization of Christopher Williams Architects, LLC.

STRUCTURAL ENGINEER

 Morrissey Engineering, LLC
 58 Essex Street
 Deep River, CT 06417
 860-532-0312

MEP ENGINEER

 Hallam/ICS
 375 West Street, Suite 220
 Mansfield, MA 02048
 Tel: 508.821.9759 Fax: 508.821.9739

ROOFING CONSULTANT

 M A CAPUTO ASSOCIATES, LLC
 ROOF & BUILDING ENVELOPE CONSULTANTS

PROJECT NAME
MARTIN CENTER ROOF REPLACEMENT
 120 BROAD STREET
 NEW LONDON, CT 06320

CWA
 CHRISTOPHER WILLIAMS ARCHITECTS LLC
 95 Willow Street New Haven, CT 06511
 203 776 0184 cwarchitects.com

NO.	DATE	REVISION
2	07/29/15	ADDENDUM #1
1	07/22/15	FOR CONSTRUCTION

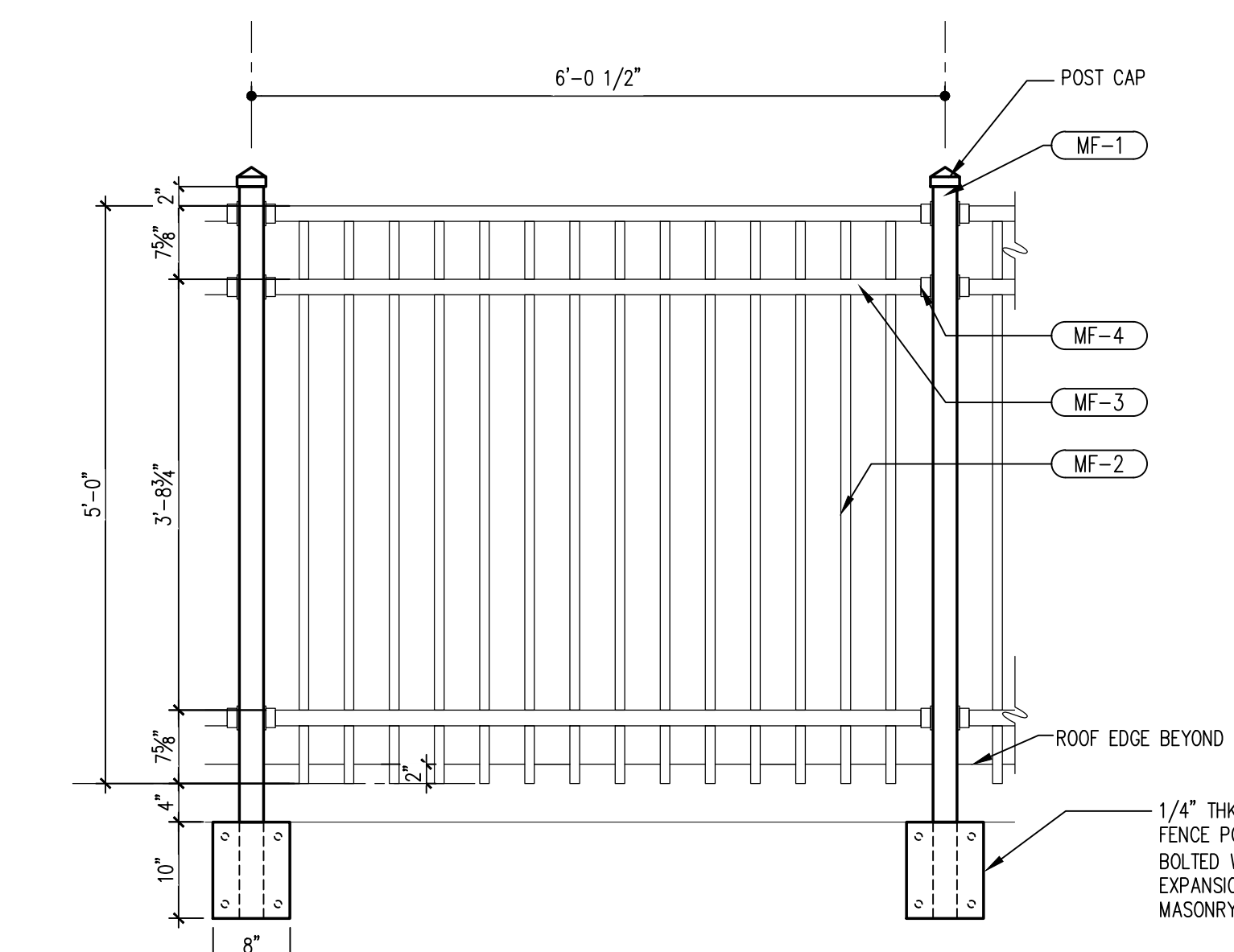
DRAWING TITLE
ROOF PLAN
 SHEET NUMBER
A102
 PROJECT NUMBER
1418



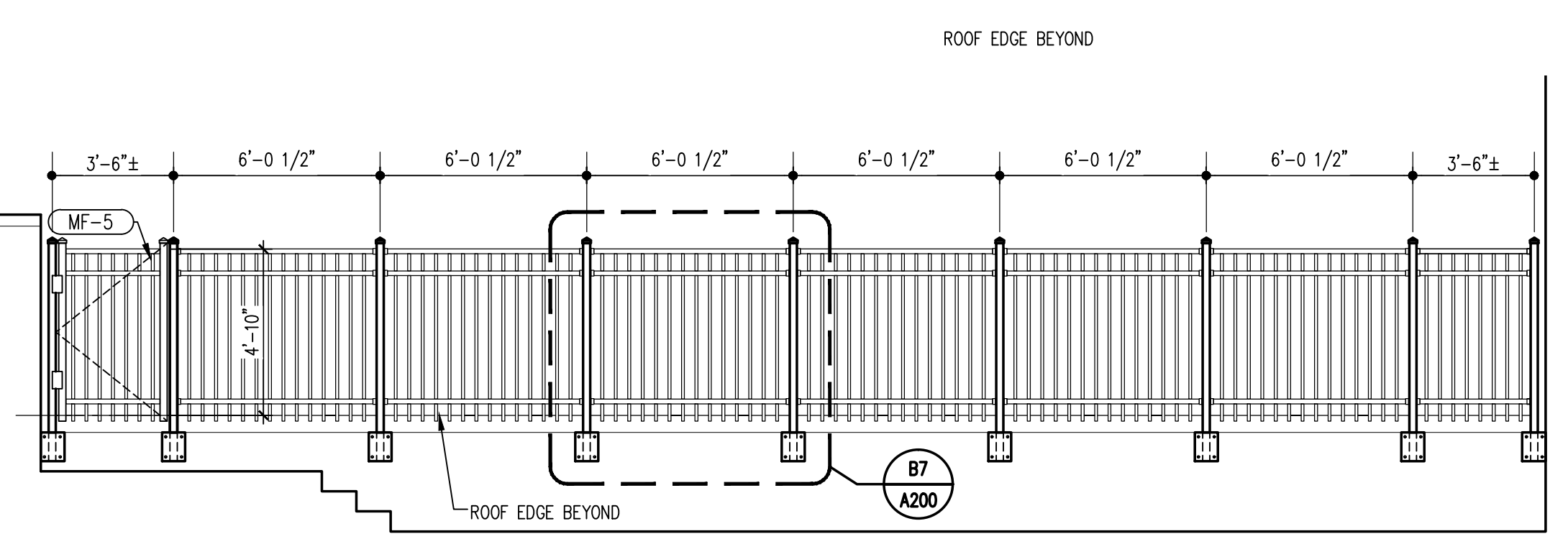
C7 GATE ELEVATION-LOOKING NORTH
1/8"=1'-0"

C6 NORTH ELEVATION/ GATE ELEVATION-LOOKING SOUTH
1/8"=1'-0"

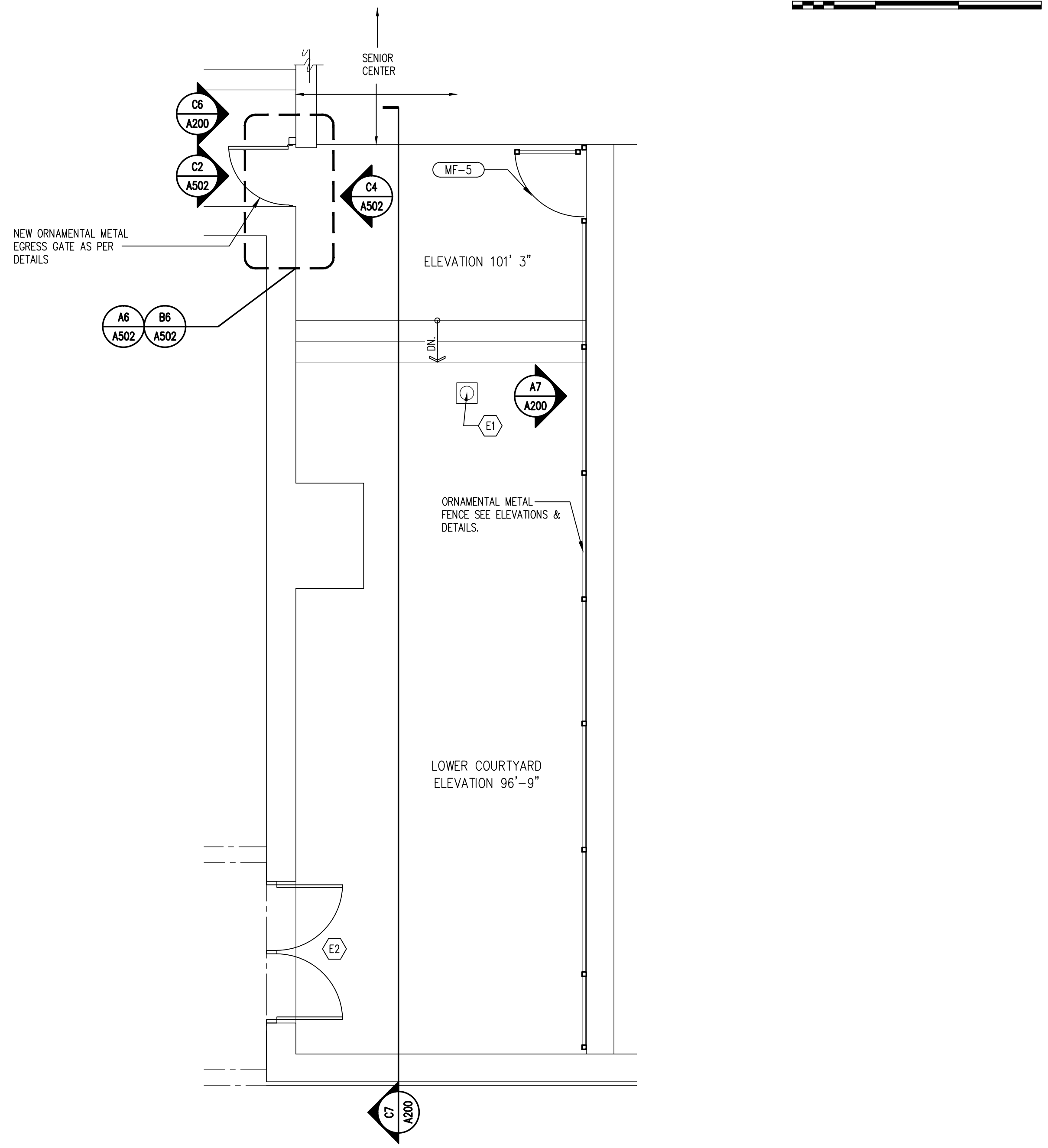
METAL PRODUCTS SCHEDULE				
PRODUCT IDENTIFIER	PRODUCT DESCRIPTION	MANUFACTURER	METAL	COLOR
MF-1	POSTS 2 1/2" SQ. x .100" W/POST CAP	AFS	6005-T5 ALUM.	BLACK
MF-2	PICKETS 1" SQ. x .062"	AFS	6005-T5 ALUM.	BLACK
MF-3	RAILS- 1 5/8" SQ. CHANNELS 1 5/8" x .070" TOP WALL 1 5/8" x .100" SIDE WALLS	AFS	6005-T5 ALUM.	BLACK
MF-4	BRACKET TO RECEIVE RAILS TYP.	AFS	6005-T5 ALUM.	BLACK
MF-5	UAF 200 STANDARD WALK GATE HORIZONTAL RAILS- 1 5/8" SQ. 1 5/8" x .070" TOP WALL 1 5/8" x .100" SIDE WALLS	AFS	6005-T5 ALUM.	BLACK
	INCLUDE: TRU-CLOSE HINGES	AFS	6005-T5 ALUM.	BLACK
	4 3/4" GATE STOP	AFS	6005-T5 ALUM.	BLACK
	LOCKLATCH MAGNETIC/LOCKABLE LOCK CLASP FOR PADLOCK SECURED TO GATE/POST	AFS	6005-T5 ALUM.	BLACK
STAINLESS STEEL FASTENERS TYP.				
FINISH TYP. =POLYESTER TGIC POWDER COAT-BLACK				
AFS=ALUMINUM FENCE SPECIALISTS, LLC-MANUFACTURED BY ULTRA MFG. INC. (ALUMINUMFENCE SPECIALISTS.COM)				



B7 TYPICAL FENCE PANEL ELEVATION
3/4"=1'-0"



A7 FENCE ELEVATION LOOKING SOUTH
1/4"=1'-0"



A4 ENLARGED PLAN
1/4"=1'-0"

GENERAL NOTES

- The intent of the Contract Documents is to include all items necessary for the proper execution and completion of all Work by the Contractor. The Contract Documents are complementary, and what is required by one shall be as binding as if required by all. Where a conflict within the Contract Documents exists, the Contractor shall provide the better quality or greater quantity of work in accordance with the Architect's resolution without any increase in the Contract sum. Organization of the Specifications into divisions, sections and articles, and arrangement of sheets shall not control the Contractor in dividing the work among subcontractors, or in establishing the extent of Work to be performed by any trade.
- REFERENCE KEY NOTES and SHEET KEY NOTES are intended to indicate and clarify the extent and requirements of the Work. They do not indicate every location or occurrence of required Work. The lack of a key note to an individual item of Work will not relieve the Contractor of responsibility to execute that Work as part of the Contract when the requirement for that Work as logically inferred by other parts of the Contract Documents.
- All corners are 90 degrees unless noted or dimensioned otherwise.

EXISTING CONDITIONS KEY NOTES

- E1 EXISTING AREA DRAIN TO REMAIN.
- E2 EXISTING EXIT DOORS.

Ownership and use of documents:
Drawings and specifications, as instruments of professional service, are and shall remain the property of the Architect. These documents are not to be used in whole or in part, for any other projects or purposes, or by any other parties, than those specifically authorized by contract, without the specific written authorization of Christopher Williams Architects, LLC.

STRUCTURAL ENGINEER
Morrissey Engineering, LLC
59 Essex Street
Deep River, CT 06417
860-532-0312

MEP ENGINEER
Hallam ICS
575 West Street, Suite 220
Mansfield, MA 02048
Tel: 508.821.9759 Fax: 508.821.9739

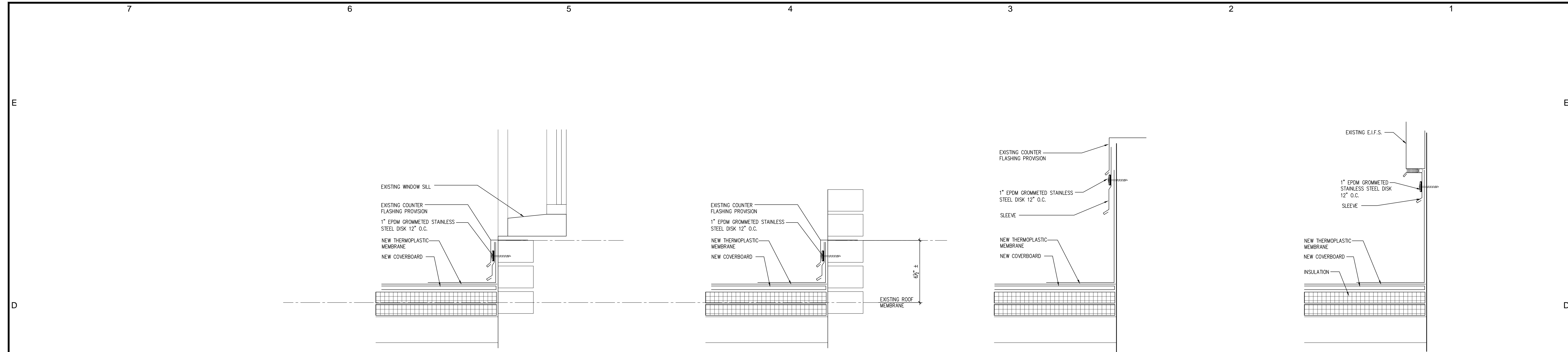
ROOFING CONSULTANT
M A CAPUTO | ASSOCIATES, LLC
ROOF & BUILDING ENVELOPE CONSULTANTS

PROJECT NAME
MARTIN CENTER
ROOF REPLACEMENT
120 BROAD STREET
NEW LONDON, CT 06320

CWA
CHRISTOPHER WILLIAMS ARCHITECTS LLC
85 Willow Street New Haven, CT 06511
203 776 0184 cwilliams@cwarchitects.com

NO.	DATE	REVISION
2	07/29/15	ADDENDUM #1
1	07/22/15	FOR CONSTRUCTION
ISSUE/REVISION		

DRAWING TITLE
EXTERIOR ELEVATIONS
SHEET NUMBER
A200
PROJECT NUMBER
1418

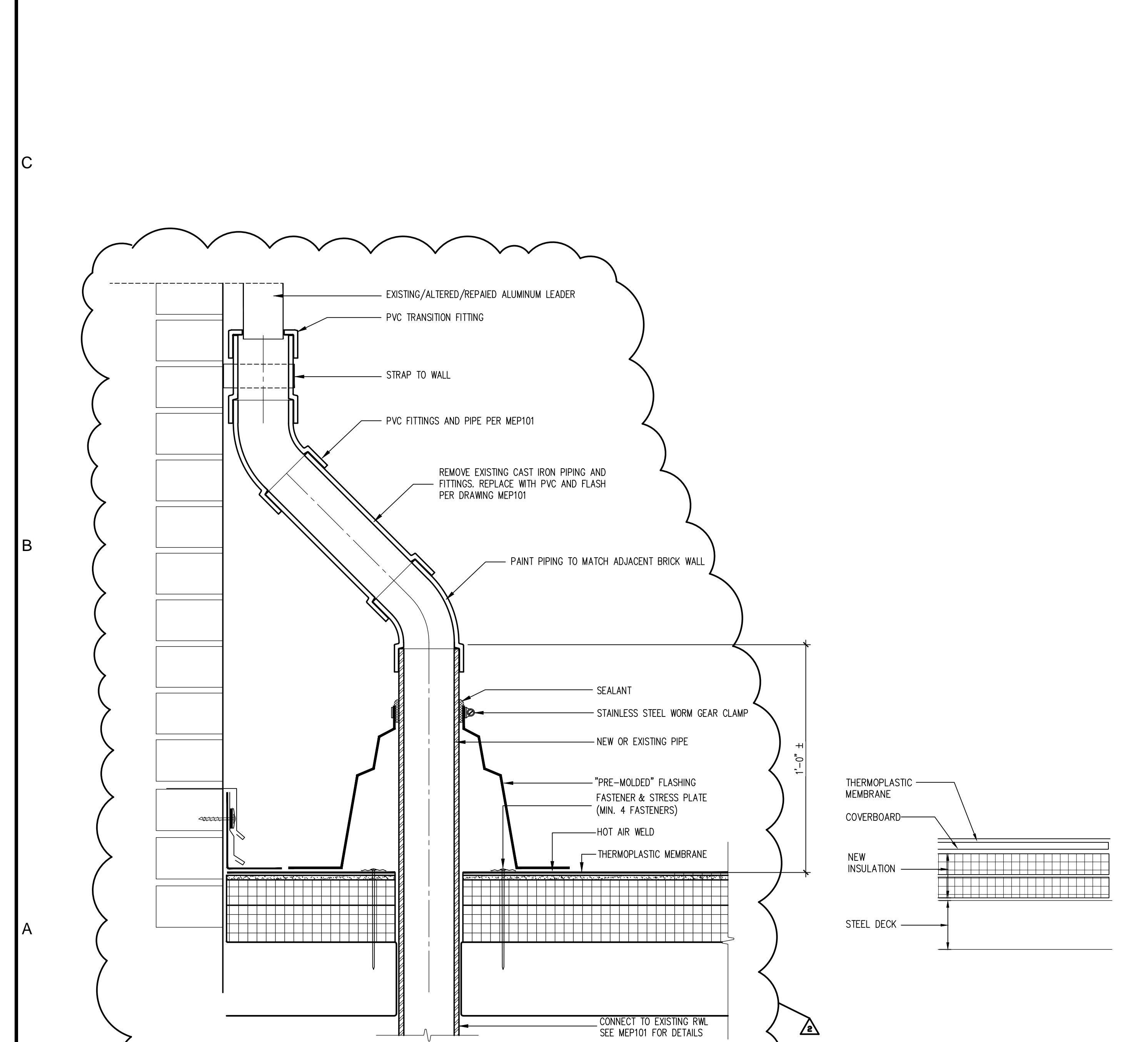


C5 WALL FLASHING EXIST. MASONRY WALL/WINDOW SILL
3'-1"-0"

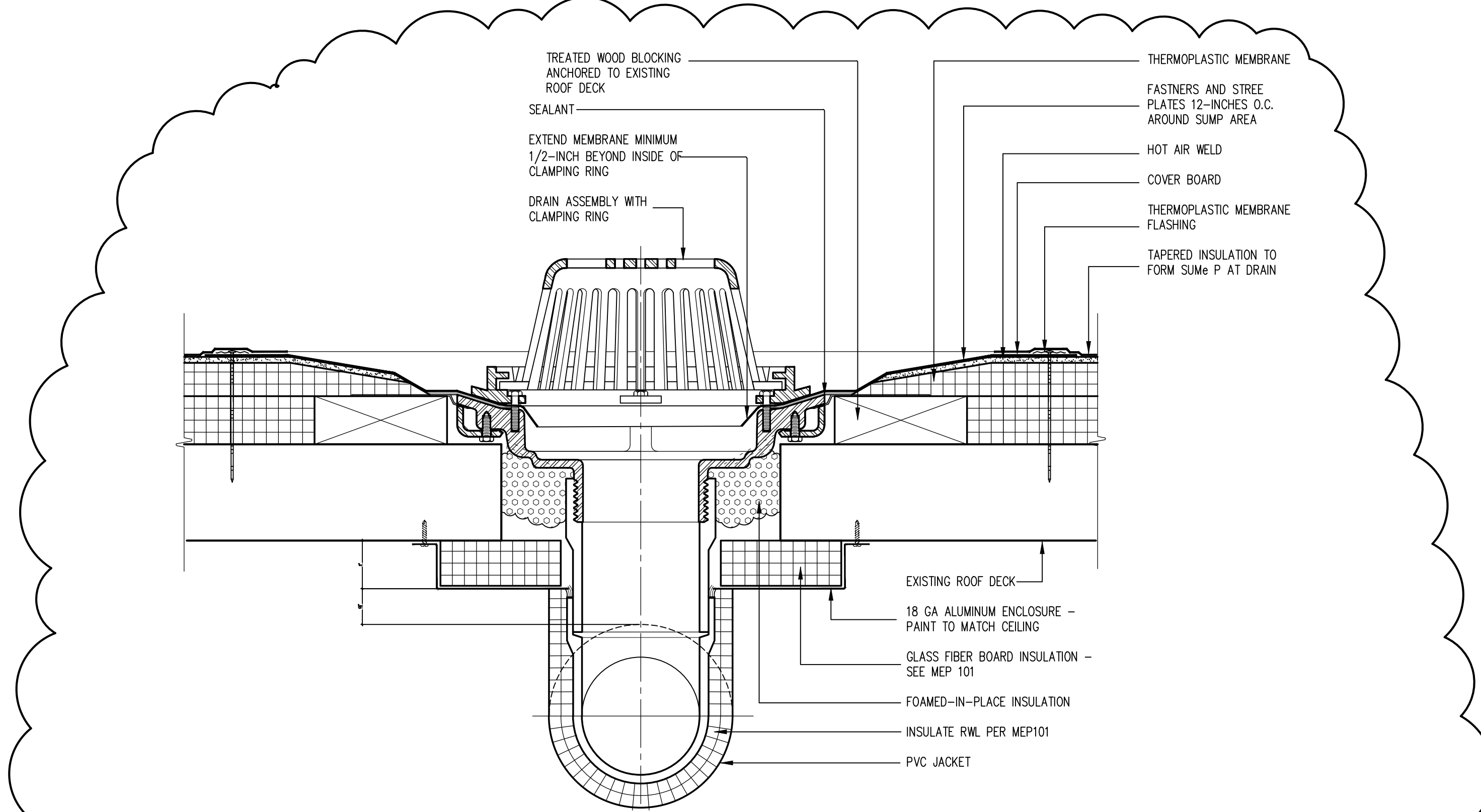
C4 WALL FLASHING EXIST. MASONRY WALL
3'-1"-0"

C3 EXISTING CURB EXTENDER/SLEEVE DETAIL
3'-1"-0"

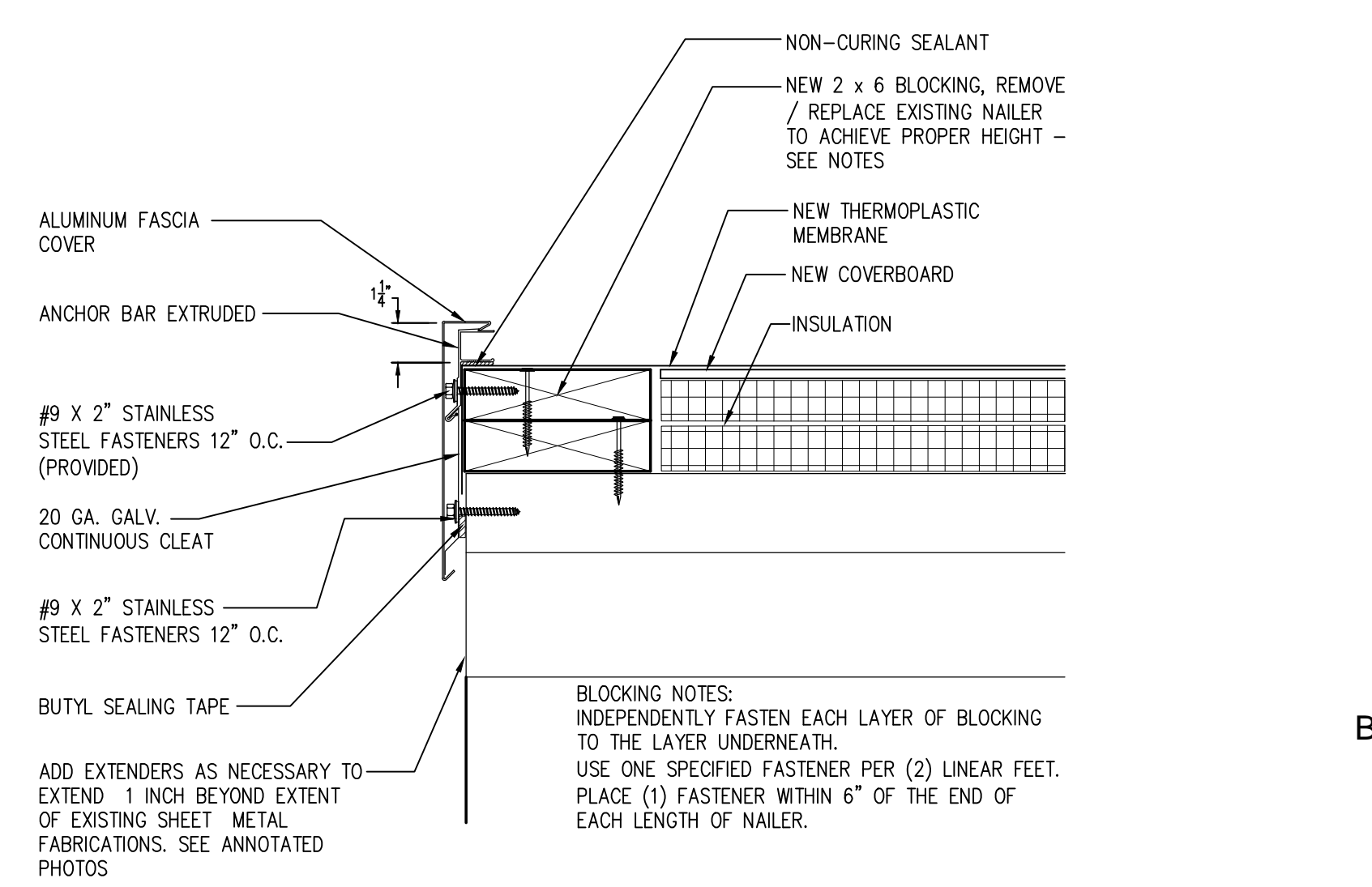
C2 E.I.F.S. FLASHING
3'-1"-0"



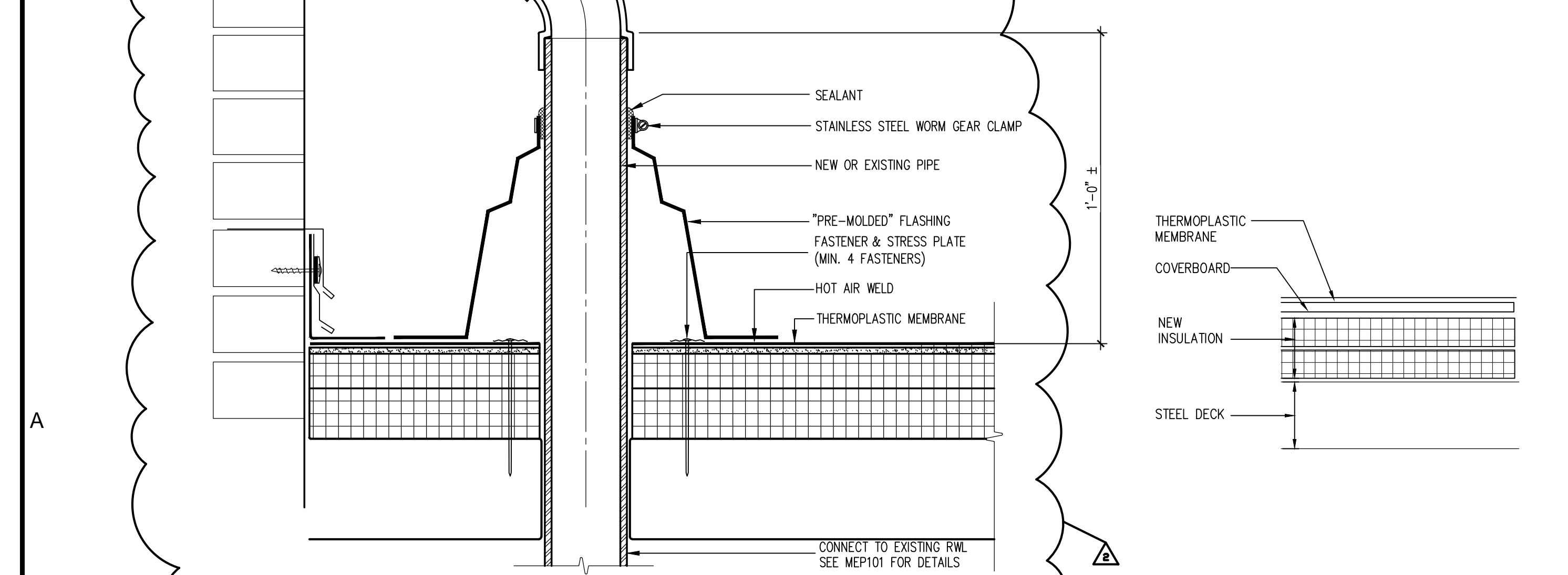
A6 RAIN WATER LEADER
3'-1"-0"



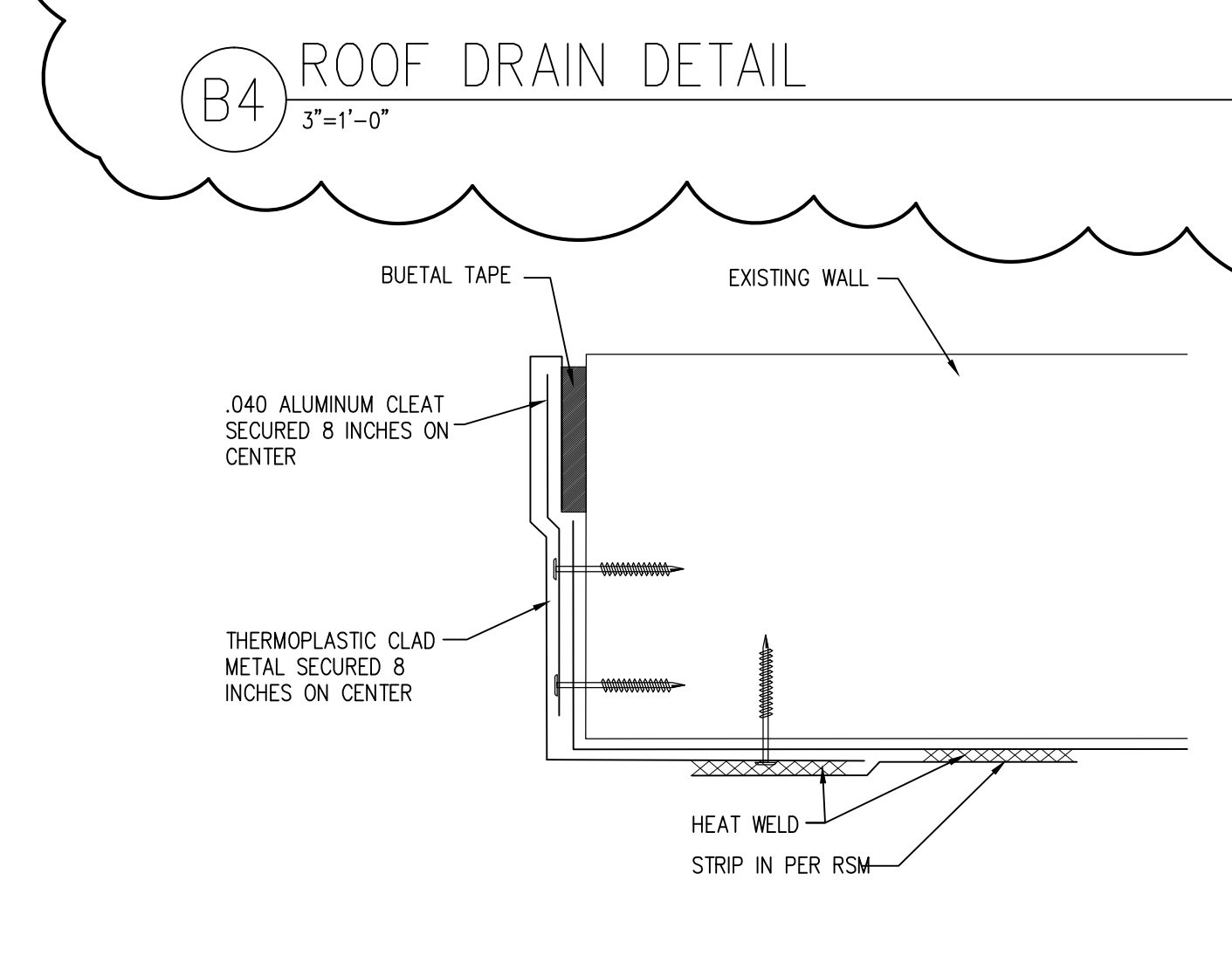
B4 ROOF DRAIN DETAIL
3'-1"-0"



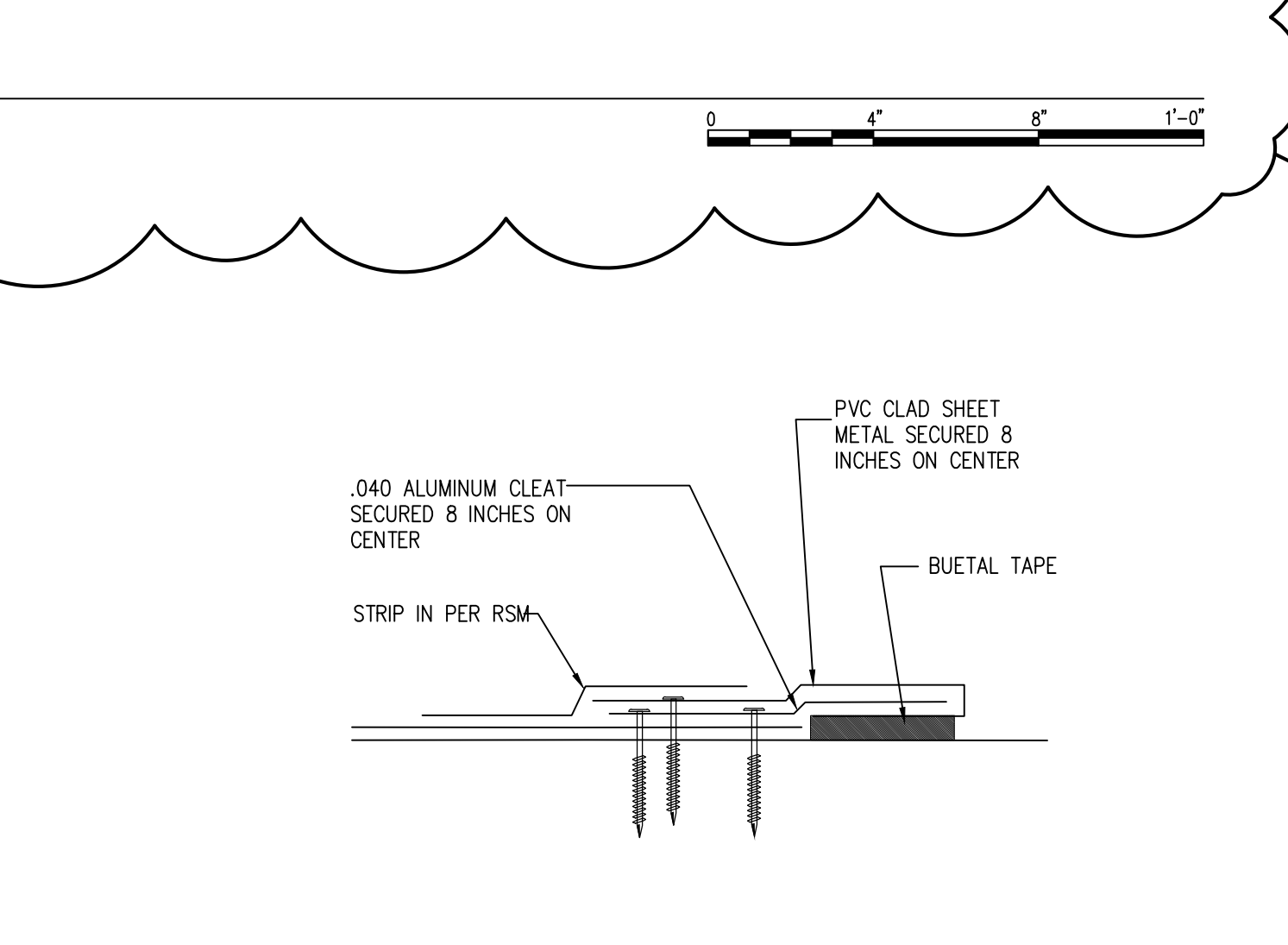
B2 METAL EDGE
3'-1"-0"



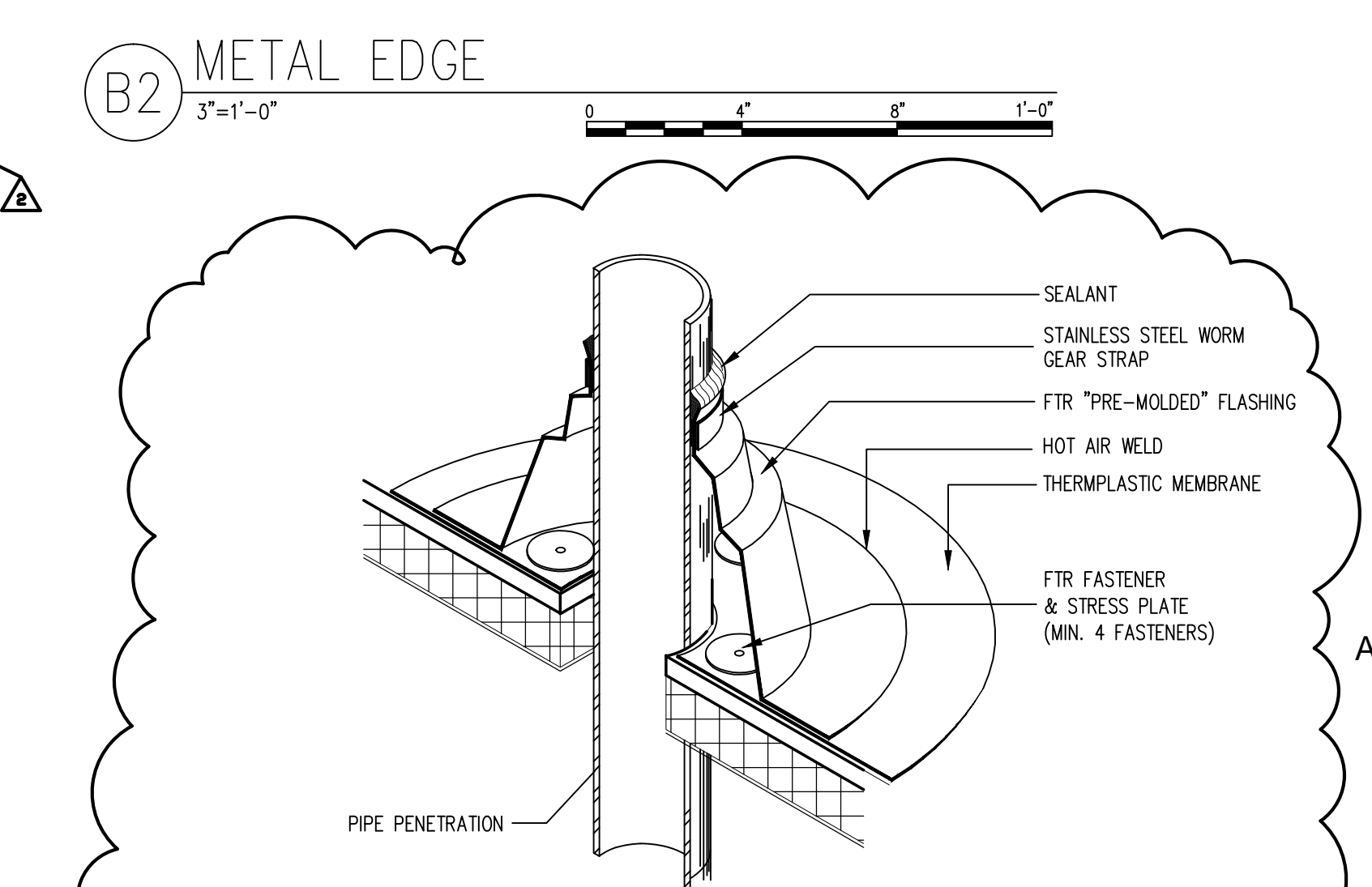
A5 NEW ROOFING ASSEMBLY (ROOF 5)
3'-1"-0"



A4 CORNER CLOSURE
3'-1"-0"



A3 CLOSURE
3'-1"-0"



A2 PIPE PENETRATION
3'-1"-0"

Ownership and use of documents:
Drawings and specifications, as instruments of professional service, are and shall remain the property of the Architect. These documents are not to be used in whole or in part, for any other projects or purposes, or by any other parties, than those properly authorized by contract, without the specific written authorization of Christopher Williams Architects, LLC.

STRUCTURAL ENGINEER
Morrissey Engineering, LLC
58 Essex Street
Deep River, CT 06417
860-532-0312

MEP ENGINEER
Hallam ICS
575 West Street, Suite 220
Mansfield, MA 02048
Tel: 508.821.9759 Fax: 508.821.9739

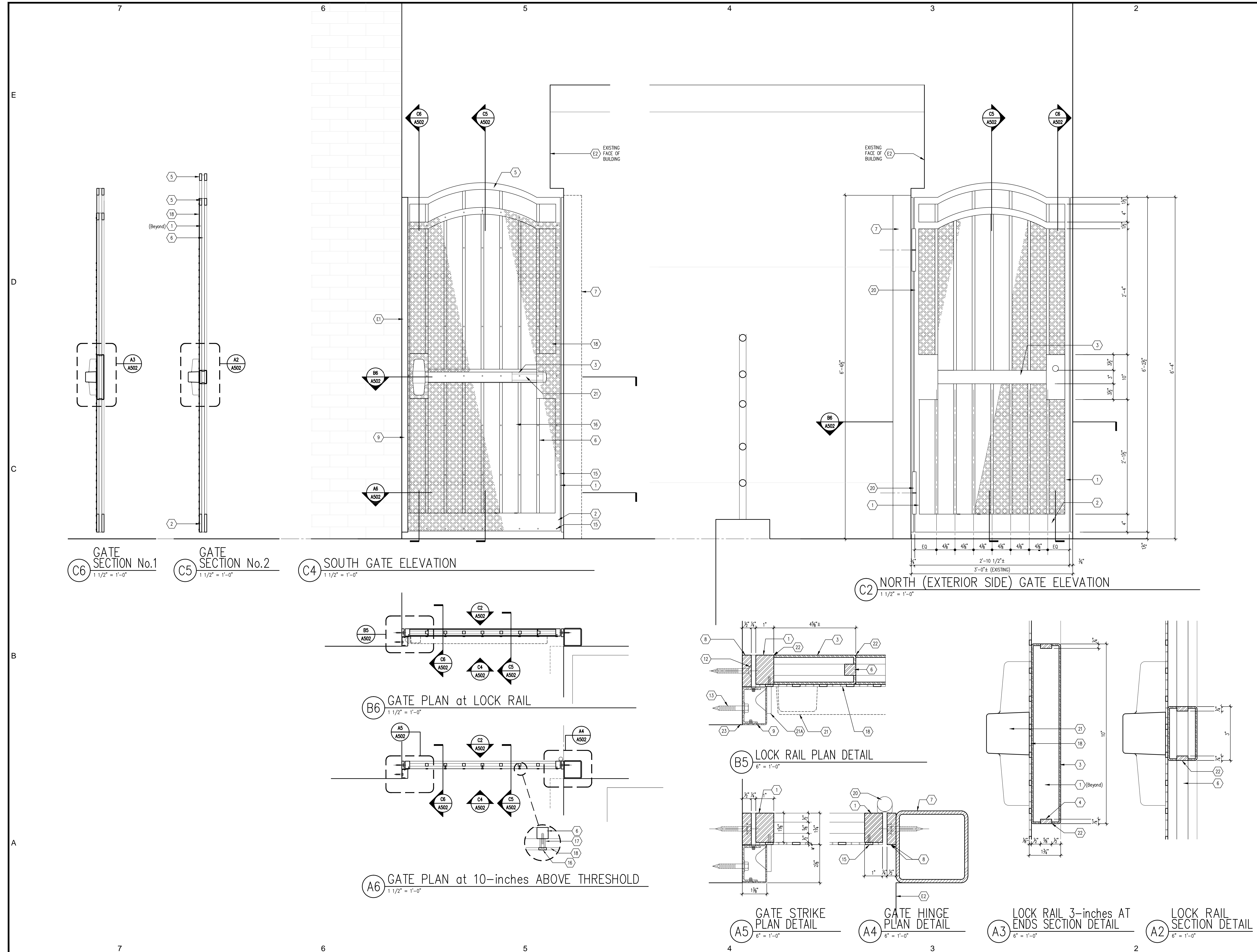
ROOFING CONSULTANT
M A CAPUTO | ASSOCIATES, LLC
ROOF & BUILDING ENVELOPE CONSULTANTS

PROJECT NAME
MARTIN CENTER ROOF REPLACEMENT
120 BROAD STREET
NEW LONDON, CT 06320

CWA
CHRISTOPHER WILLIAMS ARCHITECTS LLC
85 Willow Street New Haven, CT 06511
203 776 0184 cwilliams@cwarchitects.com

NO.	DATE	REVISION
2	07/29/15	ADDENDUM #1
1	07/22/15	FOR CONSTRUCTION

DRAWING TITLE
THERMOPLASTIC ROOF DETAILS
SHEET NUMBER
A501
PROJECT NUMBER
1418



- GENERAL NOTES**
- The intent of the Contract Documents is to include all items necessary for the proper execution and completion of all Work by the Contractor. The Contract Documents are complementary, and what is required by one shall be as binding as if required by all. Where a conflict within the Contract Documents exists, the Contractor shall provide the better quality or greater quantity of work in accordance with the Architect's resolution without any increase in the Contract sum. Organization of the Specifications into divisions, sections and articles, and arrangement of sheets shall not control the Contractor in dividing the work among subcontractors, or in establishing the extent of Work to be performed by any trade.
 - REFERENCE KEY NOTES and SHEET KEY NOTES are intended to indicate and clarify the extent and requirements of the Work. They do not indicate every location or occurrence of required Work. The lack of a key note to an individual item of Work will not relieve the Contractor of responsibility to execute that Work as part of the Contract when the requirement for that Work is logically inferred by other parts of the Contract Documents.
 - All corners are 90 degrees unless noted or dimensioned otherwise.
- EXISTING CONDITIONS KEY NOTES**
- E1 EXISTING MASONRY WALL
 - E2 EXISTING EIFS WALL
- NEW CONSTRUCTION KEY NOTES**
- GATE STILES: 1"x 1 1/2" STEEL BAR
 - GATE BOTTOM RAIL: 4"x 1/2" STEEL
 - GATE LOCK RAIL: 12 GA STEEL
 - 3/8"x 1/2" SPACERS
 - GATE TOP RAIL: FABRICATE FROM 1/2-INCH STEEL PLATE. NOTE THAT VERTICAL DIMENSION OF PLATE REMAINS 1-1/2 INCHES ACROSS ENTIRE LENGTH - TOP AND BOTTOM RADIUS IS THE SAME.
 - 3/8-INCH SQUARE STEEL BARS
 - HSS TUBE STEEL 4"x 4"x 1/4"
 - 1 1/2"x 1/2" STEEL BARS MATCHING HEIGHT OF GATE, SOWEDED TO EXISTING MASONRY.
 - GATE STOP, ON STRIKE SIDE ONLY - 14 GA STAINLESS STEEL
 - ANCHOR CLIP - 12 GA STAINLESS STEEL
 - STAINLESS STEEL FLAT HEAD SCREWS EQUALLY SPACED 8-INCHES O.C., 2-INCHES FROM EACH END.
 - TAPCON CONCRETE SCREWS: TCF514214 1/4"x 2 1/2" STAINLESS STEEL FLAT HEAD COUNTERSUNK PHILLIPS SCREWS 8-INCHES O.C., 2-INCHES FROM EACH END.
 - TAPCON CONCRETE SCREWS: TCF514134 1/4"x 1 3/4" STAINLESS STEEL HEX WASHER HEAD SCREWS 12-INCHES O.C., 2-INCHES FROM EACH END.
 - 3/8-INCH NO.10 STAINLESS STEEL FLAT HEAD MACHINE SCREWS 8-INCHES O.C., 2-INCHES FROM EACH END.
 - 1/2-INCH NO.10 STAINLESS STEEL FLAT HEAD MACHINE SCREWS SPACED AS SHOWN
 - 1-INCH NO.10 STAINLESS STEEL FLAT HEAD MACHINE SCREWS SPACED AS SHOWN; CENTER SCREWS AT CENTER OF INTERSECTION OF PERFORATIONS.
 - TUBULAR STEEL SPACER
 - 3/8-INCH PERFORATED STEEL SHEET FABRICATED BY ARCHITECTURAL GRILLE, BROOKLYN NEW YORK. PATTERN SIMILAR TO # 220 PATTERN SCALED FOR PATTERN REPEATS SHOWN.
 - CENTER PATTERN.
 - SELF CLOSING WELD-ON HINGES: PRODUCT NUMBER HH80 SOLD BY GATESPLUS WWW.GATESPLUS.COM.AU.
 - RIM EXIT DEVICE: SARGENT 8804, US 32D FINISH. DEVICE TO ACCEPT 7-PIN BEST CORE.
 - RIM EXIT DEVICE STRIKE
 - WELD, GRIND SMOOTH.
 - SEALANT.

Ownership and use of documents:
 Drawings and specifications, as instruments of professional service, are and shall remain the property of the Architect. These documents are not to be used in whole or in part, for any other projects or purposes, or by any other parties, than those specifically authorized by contract, without the specific written authorization of Christopher Williams Architects, LLC.

STRUCTURAL ENGINEER

Morrissey Engineering, LLC
 59 Essex Street
 Deep River, CT 06417
 860-532-0312

MEP ENGINEER

Hallam ICS
 575 West Street, Suite 220
 Mansfield, MA 02048
 Tel: 508.821.9759 Fax: 508.821.9739

ROOFING CONSULTANT

M A CAPUTO ASSOCIATES, LLC
 ROOF & BUILDING ENVELOPE CONSULTANTS

PROJECT NAME
MARTIN CENTER
ROOF REPLACEMENT

120 BROAD STREET
 NEW LONDON, CT 06320

CHRISTOPHER WILLIAMS ARCHITECTS LLC
 85 Willow Street New Haven, CT 06511
 203 776 0184 cwilliams@ctarchitects.com

NO.	DATE	REVISION
1	07/22/15	FOR CONSTRUCTION

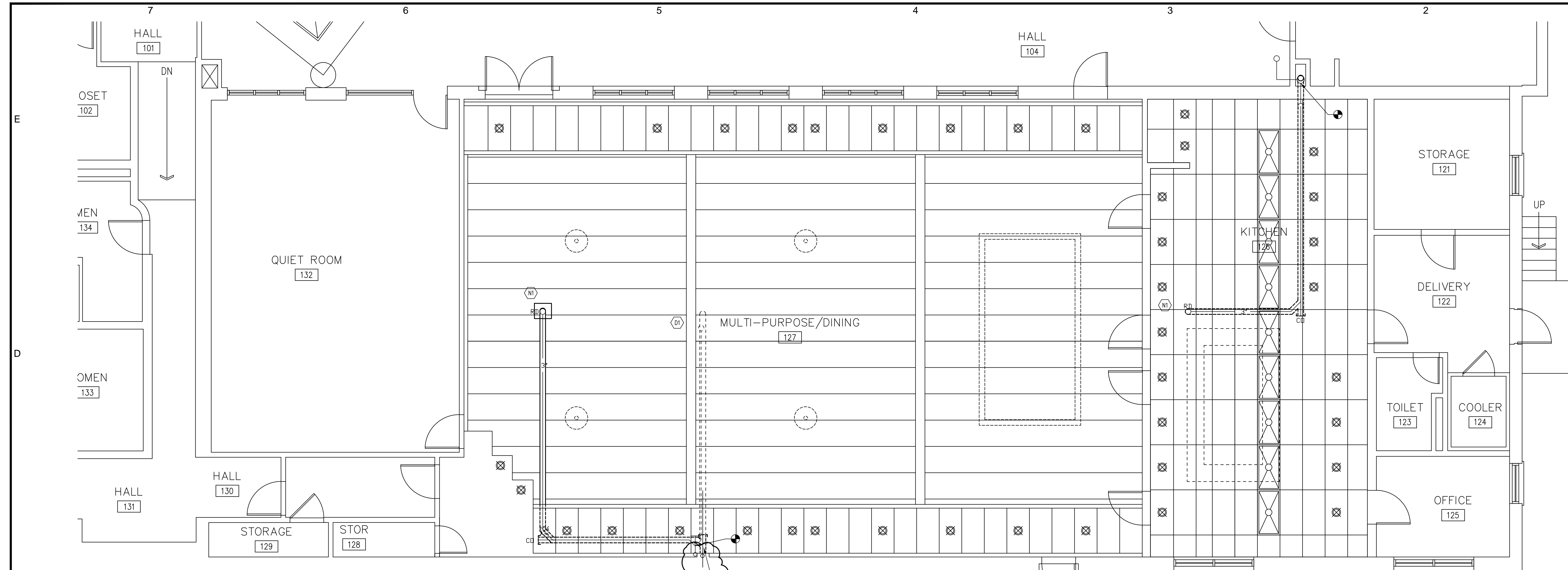
ISSUE/REVISION

DRAWING TITLE
EXTERIOR GATE DETAILS

SHEET NUMBER
A502

PROJECT NUMBER
 1418

K:\PROJECTS\1418 MARTIN CENTER NEW LONDON\1418 04 CONTRACT DOCUMENTS\1418 041 SHEET SET\1418 A502 DETAILS GATE.DWG 7/22/15 4:32 PM CWA



C7 SENIOR CENTER DRAINAGE PLAN - FIRST FLOOR
1/4" = 1'-0"

REMOVE CAST IRON PIPING ABOVE ROOF TO ALLOW FOR NEW RWL PIPING. REPLACE WITH PVC. SEE A6/A501 FOR DETAILS. MATCH EXISTING SIZE.

- GENERAL NOTES**
- The intent of the Contract Documents is to include all items necessary for the proper execution and completion of all Work by the Contractor. The Contract Documents are complementary, and what is required by one shall be as binding as if required by all. Where a conflict within the Contract Documents exists, the Contractor shall provide the better quality or greater quantity of work in accordance with the Architect's resolution without any increase in the Contract sum. Organization of the Specifications into divisions, sections and articles, and arrangement of sheets shall not control the Contractor in dividing the work among subcontractors, or in establishing the extent of Work to be performed by any trade.
 - REFERENCE KEY NOTES and SHEET KEY NOTES are intended to indicate and clarify the extent and requirements of the Work. They do not indicate every location or occurrence of required Work. The lack of a key note to an individual item of Work will not relieve the Contractor of responsibility to execute that Work as part of the Contract when the requirement for that Work is logically inferred by other parts of the Contract Documents.
 - All corners are 90 degrees unless noted or dimensioned otherwise.

- EXISTING CONDITIONS KEY NOTES**
- EXISTING ROOFTOP EQUIPMENT SHALL BE ELECTRICALLY DISCONNECTED AS REQUIRED AND PHYSICALLY MOVED TO ACCOMMODATE ROOFING AND FLASHING. REINSTALL ON MANUFACTURED STANDARD RAILS AT NEW LOCATION.
 - DISCONNECT AND REMOVE FANS TO ACCOMMODATE NEW ROOF FLASHING. REINSTALL AND CONNECT.

- DEMOLITION KEY NOTES**
- DEMOLISH EXISTING ROOF DRAIN, PIPING, INSULATION AND HANGERS AS INDICATED.
 - DEMOLISH EXISTING ROOFTOP EQUIPMENT. DISCONNECT ELECTRICAL SOURCE AND MAKE SAFE.

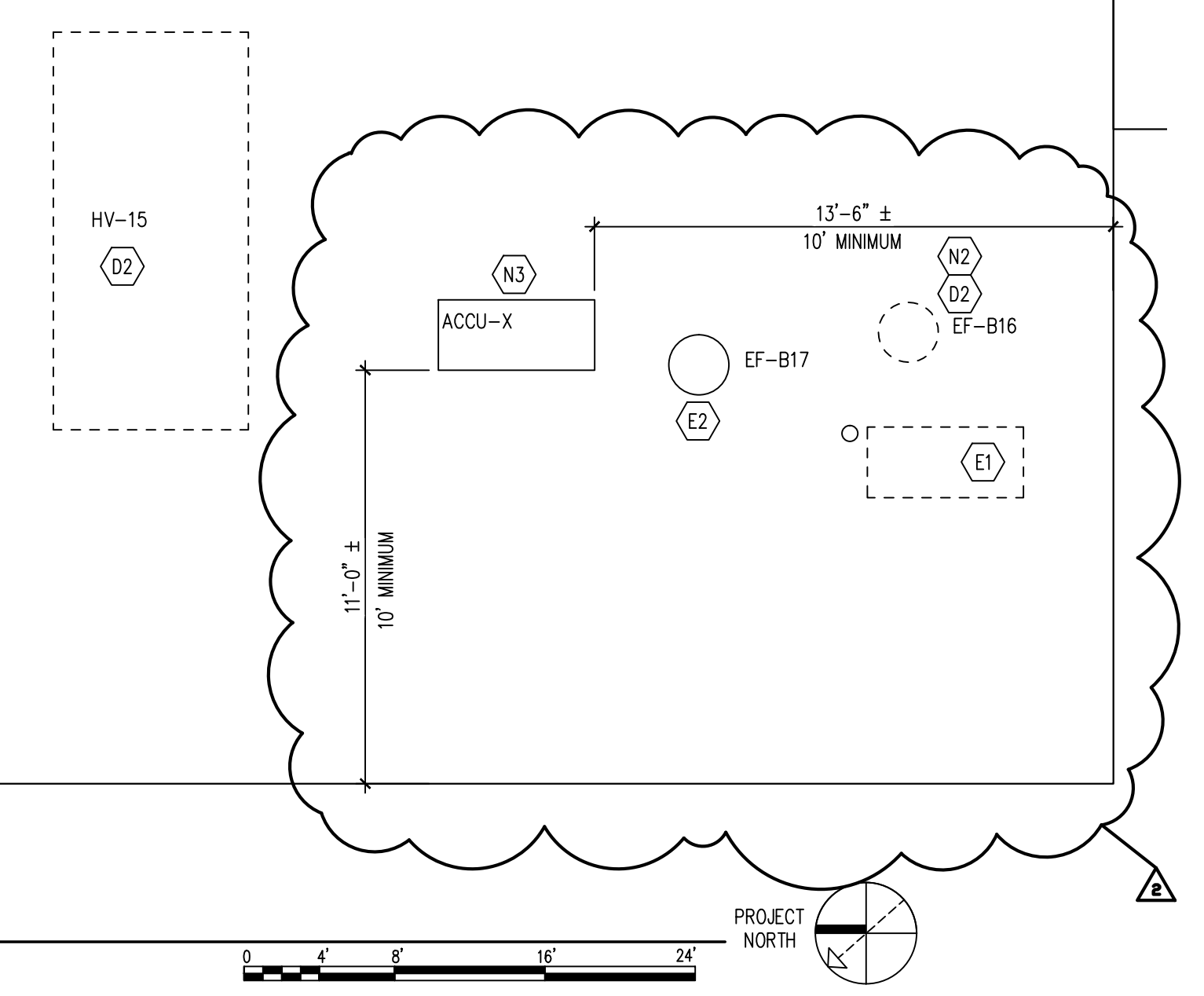
- NEW WORK KEY NOTES**
- INSTALL NEW ROOF DRAIN, AND DRAIN PIPING. CONNECT TO EXISTING STORM WATER DRAIN PIPING WHERE SHOWN.
 - INSTALL NEW EXHAUST FANS, RECONNECT ELECTRICAL FEED. PROVIDE SERVICE DISCONNECTS WITH FANS. PROVIDE NEW INSULATED CURB- 12" HIGH- MANUFACTURER STANDARD FOR SPECIFIED FAN. INSTALL LEVEL ON SHIMMED WOOD BLOCKING.
 - EXTEND REFERENCE LINES AND WIRING BELOW ROOF TO NEW LOCATION OF UNIT ACCU-X.

- PLUMBING SPECIFICATIONS**
- PROVIDE A COMPLETE ROOF DRAIN ASSEMBLY INCLUDING ALL APPURTENANCES REQUIRED FOR A COMPLETE INSTALLATION.
- ROOF DRAINS: J.R. SMITH CO. #1010T 3" THREADED OUTLET, ALUMINUM DOME, AND UNDER DECK CLAMP TO SECURE IN PLACE.
- ROOF DRAIN PIPING: SCH 40, PVC DWV SOLVENT WELD FITTINGS.
- ROOF DRAIN PIPING INSULATION: 2" THICK GLASS FIBER, ANSI/ASTM C547; 'K' VALUE OF 0.24 AT 75 DEGREES F; NONCOMBUSTIBLE OWENS-CORNING TYPE SSL-II WITH ASJ VAPOR BARRIER JACKET. PVC JACKETS ON FITTINGS.
- HANGERS: ADJUSTABLE CLEVIS HANGERS WITH SADDLES FOR INSULATED PIPES.
- EXECUTION: INSTALL ALL DRAIN PIPING WITH 1/8" PER 1' SLOPE IN THE DIRECTION OF FLOW. PROVIDE CLEANOUTS AT EVERY CHANGE IN DIRECTION GREATER THAN 45°.

- PLUMBING LEGEND**
- EXISTING WORK TO REMAIN
 - EXISTING TO BE DEMOLISHED
 - NEW WORK
 - POINT OF CONNECT NEW TO EXISTING
 - C/O CLEAN OUT
 - R/D ROOF DRAIN
 - PIPE RISE
 - PIPE DROP
 - 90° WYE FITTING WITH CLEANOUT

EXHAUST FAN SCHEDULE

EQ. NO.	LOCATION	SERVES	DESIGN BASIS	CAPACITY (CFM)	STATIC PRESSURE (IN)	MOTOR				REMARKS
						VOLTS	PH	HZ	HORSEPOWER	
EF-4	CAFETERIA ROOF	CAFETERIA	GREENHECK G-143	2625	.125	115	1	60	1	DIRECT DRIVE VARI-GREEN MOTOR
EF-B16	KITCHEN ROOF	CAN WASH	GREENHECK G-065E	110	.125	115	1	60	1/100	DIRECT DRIVE VARI-GREEN MOTOR



A6 SENIOR CENTER ROOF PLAN- MECHANICAL - ELECTRICAL
1/4" = 1'-0"

Ownership and use of documents:
Drawings and specifications, as instruments of professional service, are and shall remain the property of the Architect. These documents are not to be used in whole or in part, for any other projects or purposes, or by any other parties, than those specifically authorized by contract, without the specific written authorization of Christopher Williams Architects, LLC.

MORRISSEY ENGINEERING, LLC
59 Essex Street
Deep River, CT 06417
860-532-0312

HALLAM/ICS
575 West Street, Suite 220
Mansfield, MA 02048
Tel: 508.821.9759 Fax: 508.821.9739

M A CAPUTO | ASSOCIATES, LLC
ROOF & BUILDING ENVELOPE CONSULTANTS

MARTIN CENTER ROOF REPLACEMENT
120 BROAD STREET
NEW LONDON, CT 06320

CWA
CHRISTOPHER WILLIAMS ARCHITECTS LLC
85 Willow Street New Haven, CT 06511
203 776 0184 cwar@ctwilliams.com

NO.	DATE	REVISION
2	07/29/15	ADDENDUM #1
1	07/22/15	FOR CONSTRUCTION

SENIOR CENTER MEP PLAN
SHEET NUMBER
MEP101
PROJECT NUMBER
1418